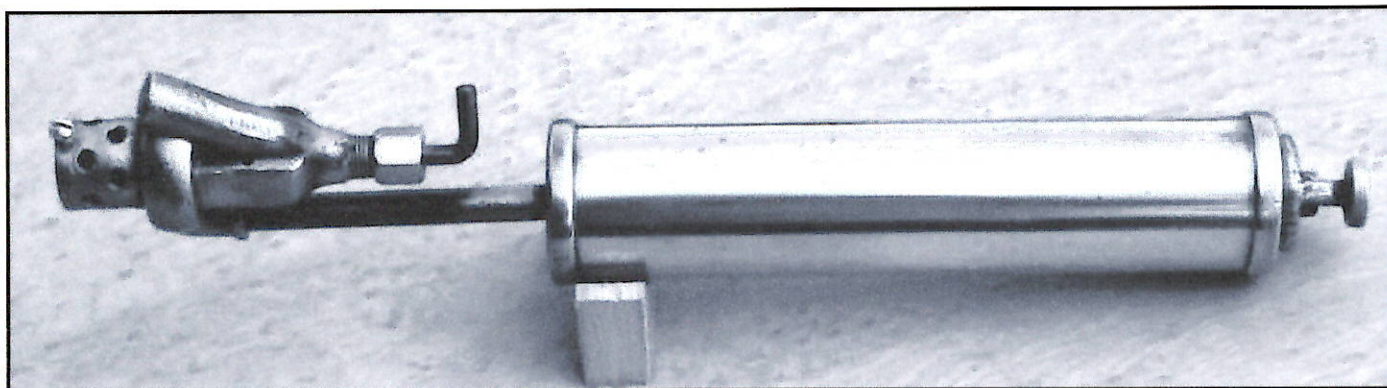


THE TORCH

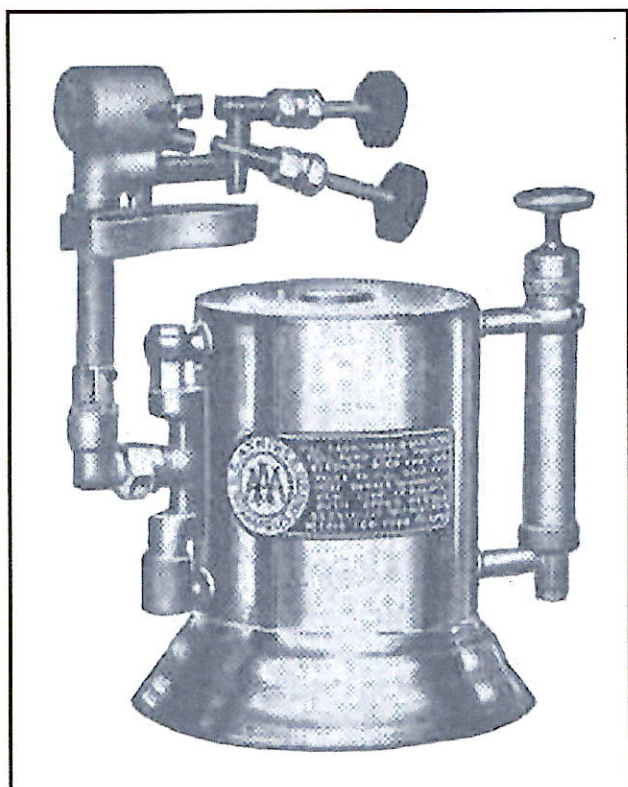
Newsletter of The Blow Torch Collectors Association

- Issue #26 -

- June 2003 -



It looks like an Everhot torch....but it's not. See Peterson-Plummer, page 10.



ATKINS MANUFACTURING COMPANY
SEE PAGE 9.

UK, page 8

Double Jet, page 7

Double Needle blow torches,
page 4

BTCA conventions,
page 9

Les Adams, page 2

"ATKINS ALWAYS AHEAD"
ATKINS

NEW MEMBERS

Dean Ballard, Yorba Linda, California, is a 3-year collector with a growing 110-torch collection. Dean has been in the plumbing wholesale business for over 30 years, and publishes his company newsletter. He enjoys polishing his torches and a small collection of soldering irons.

Ken Blackwell, Lakenheath, England, started his collection in 1999 after finding two at a boot sale. He has accumulated 90 torches/lamps to date. Ken is also a member of the UK Blowlamp Club.

Charles J. Busch, Jr., Lake Michigan is a two-year collector with over 50 torches. His friend was going to throw away a blow torch, and Charlie decided to take it home...and his collection began.

Ken Longden, Colchester, England is an 18-year collector with approximately 2000 lamps in his collection. He actually hasn't counted them in over 10 years when there were 700 pieces, so the 2000 is a conservative estimate. Some of his lamps are polished and many are on display in his home. He also has a small collection of soldering irons, carbide lamps, and gas irons. Ken is also a member of the UK Blowlamp Club.

George Murray, Newark, Delaware, started his torch collection last summer and has about 25 pieces to date. He started picking up torches at local flea markets for his brother-in-law, and because George liked the appearance of the auto torches, he decided to keep them...and one led to 25. (George sent in a great photo of a Decker & Gries torch, see the Feenix story this December.)

Langlois Ruffin, Paris, France has amassed over 3500 lamps in the past 23 years and continues to collect. He is also a plumber, and perhaps has used some of his lamps in his trade!

Jeannot Strasser, Wissembourg, France

WELCOME ABOARD NEW MEMBERS!

◆ ◆ ◆ ◆

IN MEMORIAM

We were sadly advised that our dear friend and fellow publisher, **Les Adams** passed away on May 1st. For those of you that did not have the pleasure of knowing Les, he was the publisher of the British Blow Lamp News, printed 43 issues, and mailed out his first issue in August 1992. He was an accomplished artist and always had great sketches of various blow lamp/torch parts or manufacturer logos in each of his newsletters for the members to identify. Les also created some very interesting blow lamp theme Christmas cards that were quickly plagiarized by THE TORCH, and were reproduced on the front page of issues number 16, 21 and 24. We were fortunate enough to have Les and his lovely wife Gina attend many of our West Coast Annual BTCA Conventions.

Les was thinking of his British Blow Lamp group right up to the end. He passed away two days before their scheduled Blow Lamp Show, and requested that there be no mention of his passing until after the event. He did not want the event to be affected by his passing...a true gentleman to the very end. **Vera Feast** wrote the following tribute:

LES

Such a sadness now what can one say
Our dear friend Les bids farewell and gone.
But our memory of him will never erase
Fondly with us he lives on.

Our troubled minds try hard to understand
Deprived of his presence taken from us all
We bid farewell to this lovely man.
Questioning why intense felt grief
Overwhelming sorrow and disbelief.

Les always took time for his fellow man
One who understood their troubles with helping hand.
The status he earned through his busy life
He used with kindness and with care.
Highly regarded by one and all
Whoever needed help he'd be there.

How we'll all miss those stories that he'd tell you and I
All those naughty little jokes that he'd chirp.
With a mischievous twinkle in his eyes.
Such enthusiasm he gave to us blow lamp crowd
Our collections all proudly stand.
Saluting our Les for his legacy left
As one of our greatest clan!

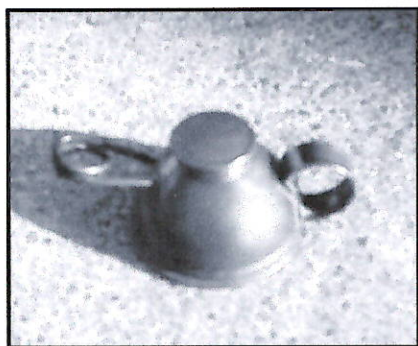
Les rests now on plains of tranquility
Where his soul ebbs forever more.
We'll reflect on all that he achieved
Les rests in peace behind heavens door.

VERA FEAST, May 2003

◆ ◆ ◆ ◆

☰ NOTES FROM ALL OVER ☰

Thanks to **Dr. Charles Smith's** contribution in issue #25, **Roy Goodwin** was able to identify one of his unknown blow torches. Roy actually had sent in a photo of his unknown torch some time ago, but no one had any idea what it was. There are no markings and no indication of fuel requirements, however, from Roy's photo and Dr. Smith's information, we determined that Roy has a Rapid-Fire Blow Torch.



Roy
Goodwin's
Rapid-Fire
Blow torch

Keith Hawkins sent in a question asking if anyone has ever seen or heard of Korean blow torches? Please let us know if you have a Korean produced or labeled torch? Keith boasted about recently acquiring a Primus Paint Stripper, a Bladon soldering torch of an unknown date, a French FJ, and a 20-liter Primus. Keith has been collecting for about 17 years and has an estimated 800 blow torches from 28 countries!

We believe that if you looked in the dictionary under the word "collector" you would find **Lee Miller's** name as a reference to who a collector is. It seems that Lee collects just about everything, but specifically he has over 3500 blow torches, 15,000 license plates, 50 fire extinguishers, a few hundred yard sticks, over 100 clocks, 11 antique cars with 3 restored, and a bunch of antique furniture. Now that's a collector!

Dave Magerko shared with us that he recently purchased a Turner Halide Detector, model #H-15. It's the ½ pint model that was produced with a nickel plating, and a Halide

sampling tube that was attached directly into the burner rather than into a collar as is on model #H-1. Are there any other model #H-15's out there?

Mike Jones submitted a copy of a Max Sievert blow lamp box label. Perhaps one of our European BTCA members can explain the Sievert statement on the label; "*First in 1882, leading ever since.*" We know there are many patents from the US and other countries that predate 1882, so we are perplexed as to the statement of "*First in 1882.*"



← "First in 1882,
Leading ever since."

Tim Szabo gave us a heads up on a torch in his collection, a model #6013 H.D. Hudson. We're awaiting more information to determine classification, i.e. manufacturer or brand label, and we'll report the results in the December issue of *THE TORCH*.

We recently heard from **Don Steininger** about his two Kemode Mfg. Co. cartridge soldering irons that he purchased in Arcadia, Florida during a recent trip. The Kemode iron utilizes a chemical reaction within a sealed cartridge for heat. Don also sent in the operating instructions if anyone needs a copy.

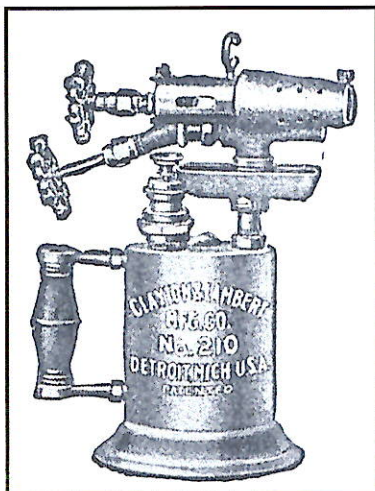
We also received a great line drawing of a HYDROCARBON BURNER CO. blow torch from **Michel Duval**, along with an assortment of other torch literature.

◆ ◆ ◆ ◆

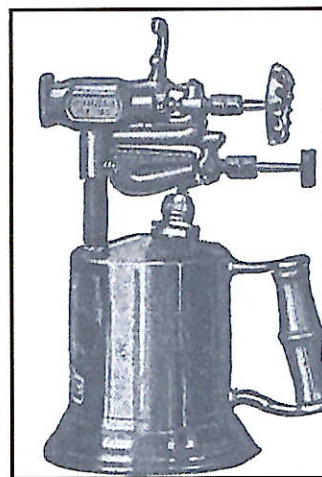
DOUBLE NEEDLE BLOW TORCHES

Of all the US blow torch manufacturers, a few offered a DOUBLE NEEDLE blow torch.

What's a DOUBLE NEEDLE blow torch? A good question since there are a lot of look-alikes. True DOUBLE NEEDLE blow torches had a unique design feature that allowed cleaning of the orifice during operation. That is what most of the second needles actually did.... they cleaned the orifice.



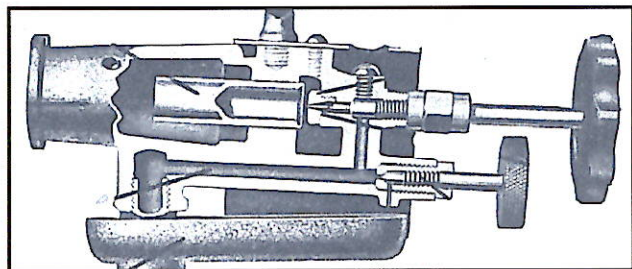
Clayton & Lambert
Double Needle Torch
Circa 1926
Model #210
Pint capacity



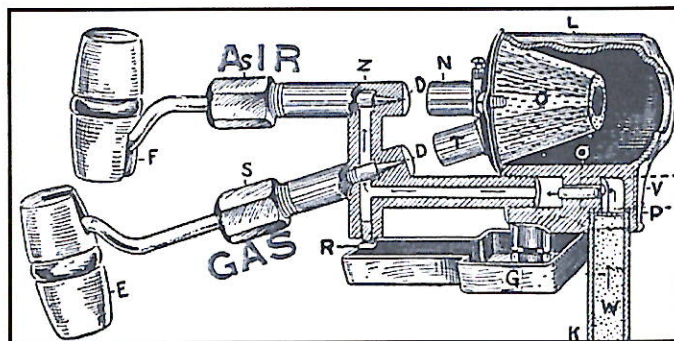
Turner Brass Works
Circa 1932
Model #35
Instant Lighting
Blow Torch

To really confuse you.... there is yet one more look-alike to the DOUBLE NEEDLE, the Turner DOUBLE JET torch. Both valves were used simultaneously to adjust and increase the size and intensity of the flame. The DOUBLE JET burner was patented by Turner on June 11, 1901, and was capable of generating temperatures nearly twice that of single needle torches.

Other types of look-alike torches had a second needle to release fuel easily into the drip cup (some of Turner, Montgomery Ward's Eclipse, and Preway torches had this feature). Turner referred to this feature as the Non-Spill Drip Cup Filler Valve.



Turner Brass Works, Circa 1941
Lower valve is Non-Spill Drip Cup Filler Valve

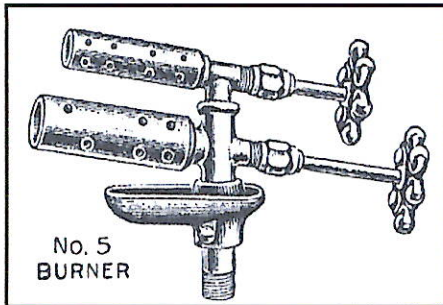


Turner Brass Works, Circa 1902
DOUBLE JET BURNER ASSEMBLY
Patented June 11, 1901

In summary there were DOUBLE NEEDLE torches, Non-Spill Drip Cup fillers, Instant Light torches, and DOUBLE JET torches... all with double valves as part of the burner assembly.

DOUBLE NEEDLE CONT.

There is one more look-alike. It may be stretching the point, but some collectors could be confused about this one since it also has two valve control knobs. C&L produced what looked like a DOUBLE NEEDLE torch in 1905. However, it was actually a DOUBLE BURNER torch.



Clayton & Lambert
Model no. 5
Burner Assembly
Circa 1905

The model #5 DOUBLE BURNER blow torch had a second smaller burner assembly mounted just above the main burner assembly that produced a smaller more precise flame than the main burner assembly.

The Double Needle Story:

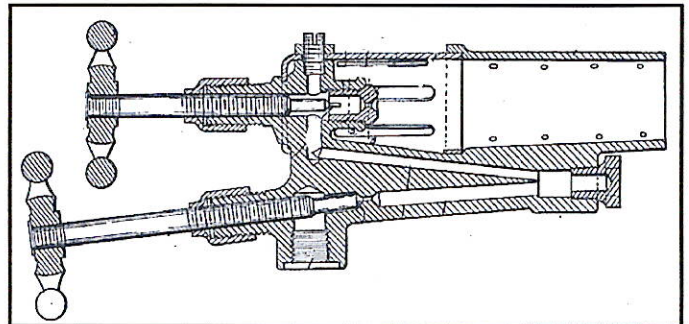
Available literature dates the earliest DOUBLE NEEDLE torches to Clayton & Lambert, circa 1920. Other popular names of DOUBLE NEEDLE torch manufacturers included Turner Brass Works, and Detroit Torch. While the Otto Bernz Co. was considered one of the three largest blow torch producers in the US, there are no records to show that Bernz ever produced a DOUBLE NEEDLE blow torch. If you have one....we would certainly like to hear from you!

Other US manufacturers, such as Geo. Diener and Detroit Torch, also produced such a design, but they were not as prominent as the larger producers. We are not aware that any DOUBLE NEEDLE torches were ever brand labeled, so if you have one.... we would also love to hear from you!

CLAYTON & LAMBERT

We believe that Clayton & Lambert coined the term, DOUBLE NEEDLE, and offered the feature from about 1920 through the late 1930's when they adopted a different approach to orifice cleaning. In an early 1920's patent description, the inventor, Otto Groehn describes the problem experienced by many blow torch users and the solution to the problem.

"It is a frequent occurrence that some sediment carried by the liquid fuel will be carried to the fine aperture (orifice) of the jet tube, where it will lodge and obstruct the flow of gas. With certain construction used conical pointed valves, or so-called needle valves, have been arranged at the jet nozzle, but these are insufficient to prevent clogging of the jet port and also have a tendency to enlarge the aperture"



Otto Groehn's Double Needle Patent
July 22, 1924

Otto Groehn's invention produced a blunt cleaner needle with a wire tip that was positioned above the fuel valve. Any occurrence of clogging was easily remedied by screwing the cleaner needle in and out until the obstruction was cleared. The lower valve was the fuel control and also had a blunt point to eliminate orifice enlargement. It regulated the supply of fuel to the burner.

A Clayton & Lambert 1920's advertisement boasted that; *"The Improved Double Needle Torch practically does away with all burner troubles and adds many years to their usefulness. They produce 300 degrees more heat. Burn gasoline or kerosene. All parts are interchangeable and can be removed for cleaning. Double Needle Burners save time and fuel, which adds to your profits. Double Needle Torches are practically FOOL PROOF."*

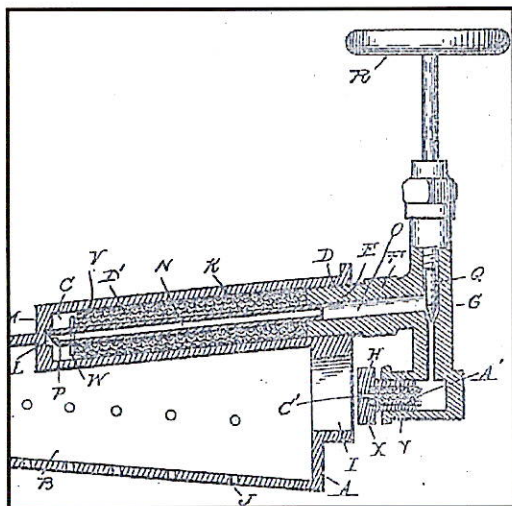
DOUBLE NEEDLE CONT.

Clayton & Lambert produced the following model nos. as DOUBLE NEEDLE torches: 48D, 206, 207, 208, 209, 210, and 211.

Like many other blow torch manufacturers, Clayton & Lambert also produced SINGLE NEEDLE torches. They had the same blunt needle design with a wire tip, but the entire burner assembly was considerably different from a DOUBLE NEEDLE burner assembly.

Clayton & Lambert also experimented with other methods of reducing or eliminating coke clogging, and in 1915 they were awarded a patent for an improved torch burner assembly. The improvement included a fine wire mesh that was inserted into the fuel path inside the burner assembly. The purpose was to filter out any particles that could clog the orifice.

We believe that this filtering feature may have been incorporated in later C&L blow torches, but not with the offset valve knob. We have also seen the fine wire mesh inserted into the fuel supply line leading up in to the burner on C&L torches, as well as other manufacturers.

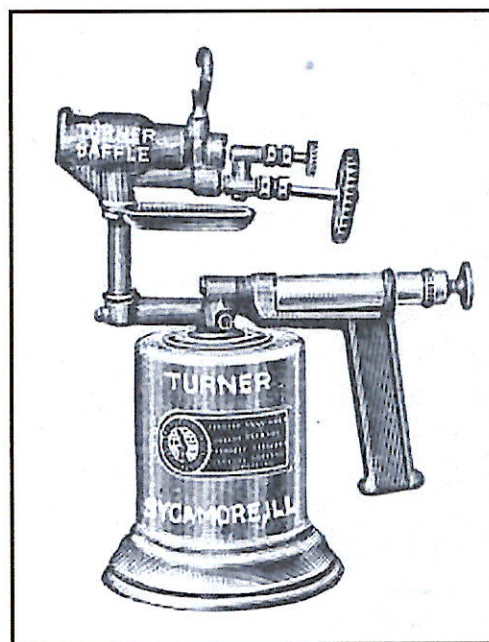


Clayton & Lambert
Improved Burner Design With Wire Mesh Filters
Patented April 27, 1915

TURNER BRASS WORKS

The Turner Brass Works produced their Master Line series of blow torches, and model nos. 43, 44, 45, 45A, and 47 were offered with DOUBLE NEEDLE construction. There may be some confusion with Turner torches since they also produced DOUBLE JET blow torches that looked very similar to DOUBLE NEEDLE blow torches, but were distinctively different.

Turner did not advertise their DOUBLE NEEDLE torches as having orifice cleaning capabilities. The top valve controlled the flame and the bottom valve was the fuel shutoff.



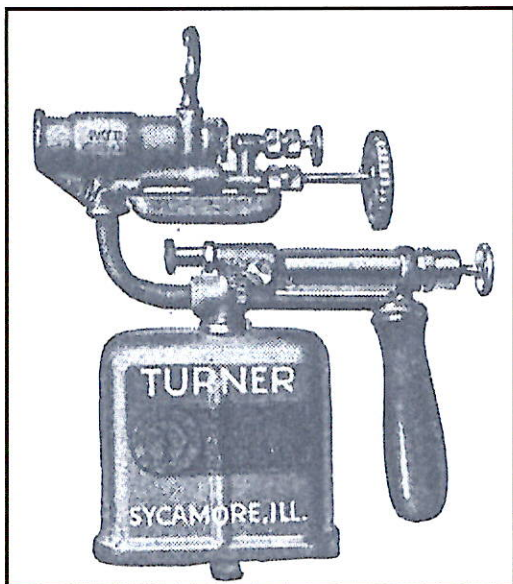
Turner Brass Works
Master Line Series, Model #45
Circa 1925

In addition to the Master Line DOUBLE NEEDLE torches, Turner also produced other DOUBLE NEEDLE torches, specifically model nos. 9, 14, 22, 32, and 39. Turner also manufactured a model no. 39A. The second valve knob below the main fuel shutoff was actually a non-spill drip cup filler valve that, when opened, allowed fuel to drip from the burner assembly into the drip cup for initial ignition.

Later versions of model no. 45A, circa 1941, also included the non-spill drip cup filler valve feature.

DOUBLE NEEDLE CONT.

Turner Brass Works also produced a line of Auto Torches that have the same burner characteristics as Master Line torches, but with the typical flat fuel tank. Model no. 52 was offered with DOUBLE NEEDLE construction, and model no. 52A was produced with the non-spill drip cup filler valve feature.



Turner Brass Works
Auto Torch, Model #52
Circa 1925

OTTO BERNZ

While the Otto Bernz Co. did not produce a DOUBLE NEEDLE torch, they did invent and market a cleaning tool that accomplished the same task of orifice cleaning. (See *THE TORCH*, issue #17, July 2000, page 7 and attachment for details on the Bernz cleaning tool.) Unfortunately the operator would have to partially disassemble the burner assembly to access the orifice.

Perhaps the Bernz Company decided that, to do a thorough job of cleaning the orifice, one would have to access the orifice with the Bernz tool, and that their process and tool was far superior to the DOUBLE NEEDLE design.

◆ ◆ ◆ ◆

TURNER DOUBLE JET BLOW TORCHES

The Turner Brass Works produced another line of unique blow torches that looked very much like DOUBLE NEEDLE blow torches....the DOUBLE JET torch.

Asa W. Straight submitted a DOUBLE JET invention to the US Patent Office on March 10, 1896, and was awarded a patent on June 11, 1901 that was immediately assigned to the Turner Brass Works Co. The company then applied the patent principles to a two-valve burner that provided the operator with varied adjustments to the flame size and intensity.

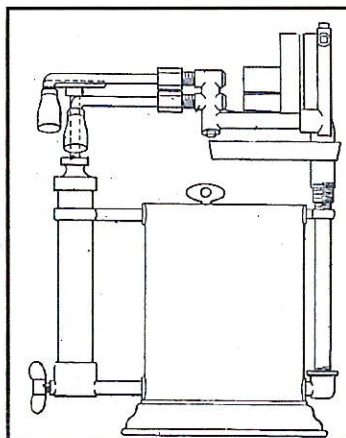
DETROIT TORCH

We have very little information on The Detroit Torch Company, other than they did produce a DOUBLE NEEDLE torch, circa 1927. Please submit any information you may have.

GEO. DIENER CO.

The Geo. W. Diener Mfg. Co. produced two known DOUBLE NEEDLE blow torches in circa 1930, model nos. 250 & 252. They advertised that the upper needle cleaned the orifice and the lower needle controls the fuel, although either needle could be used to adjust the flame.

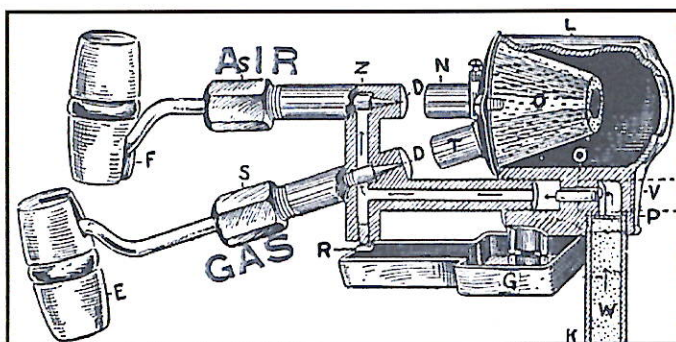
An interesting note, Geo. Diener blow torches could burn either gasoline or kerosene...without changing any parts.



TURNER BRASS WORKS
Double Jet Burner
Patent
Applied for, March 10, 1896
Awarded, June 11, 1901
Asa W. Straight, Inventor

DOUBLE JET CONT.

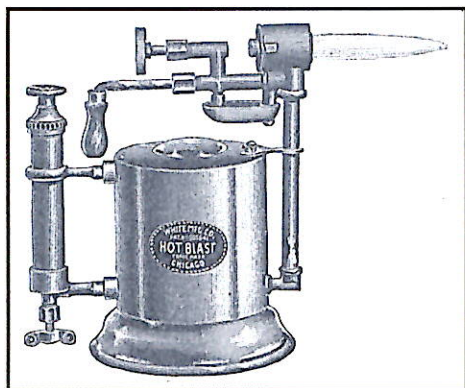
The earliest Turner DOUBLE JET torches were various versions of model nos. 3 and 4, and were capable of producing very hot precise flames in excess of 3500 degrees F. Each of the models could be adjusted down to a needlepoint in size.... with the same heating power. And in every case, the DOUBLE JET burner produced a much higher temperature flame than any single valve burner.



Turner Brass Works, Circa 1902
DOUBLE JET BURNER ASSEMBLY
Patented June 11, 1901

As you can see in the cutaway, the lower valve controlled the gas supply, and the upper valve regulated the air blast. The two-valve combination made it possible to combine the gas and air in an entirely new way, and the Asa Straight invention was a distinct advance in high heat production.

The White Manufacturing Co also produced a DOUBLE JET blow torch, model #18, and it was coined **White's Hercules**.



White's HERCULES, Double Jet
Circa 1905

The first we see of White Hercules is in a Turner Catalog dated 1905. Timing and patent information is uncertain for the White DOUBLE JET, since Turner Brass Works acquired the White Mfg. Co. early in 1904, and a few years after Turner introduced their DOUBLE JET line of torches.

♦ ♦ ♦ ♦

UK Blow Lamp Society Meeting

Graham Stubbs was fortunate enough to attend the May 3rd Blow Lamp Society meeting in England, and the following are comments from Graham:

"The UK blowlamp society meets in the spring of each year. This year's meeting, in Lingfield, Surrey, England, was held in a village meeting hall, on a beautiful spring day. The UK group has about 120 members, and this event attracted more than 60 attendees from the UK, France, Belgium, the Netherlands and Germany. Remember, these days you can take a car through the tunnel from the continent. Many of the collectors were motivated by the opportunity to sell or exchange blowlamps.

Stephanie, and I were able to make our holiday in England coincide with the meeting, and what a pleasure it was to meet so many knowledgeable and enthusiastic collectors. I was happy to see John Tingle, who has attended several of our BTCA conventions. A sad note was the news of the recent passing of Les Adams, the founder of the UK group.

I found particularly interesting the great variety in forms and sizes of European blowlamps. Some of the highly polished examples were huge! More than one European collector had in excess of 3000 torches (sorry...lamps). Michel Duval, of France, has a unique collection of more than 350 pieces...but just one from each make, worldwide. I found that many of the collectors were very knowledgeable about American torches, and there were quite a few American torches present; several European collectors are members of our BTCA group.

UK CONT.

Several people asked why American collectors don't seem so interested in European torches (lamps).

Andy Feast, who had invited us to the meeting; had 300 lamps (just a part of his collection) displayed across the stage of the hall. Andy's wife, Vera, organized the provision of a magnificent (and continuous) lunch.

This meeting in the UK is an annual event, and I would strongly encourage BTCA members to make the trip. If you can't make the UK meeting, there are other similar events in at least France and Germany. You can contact one of the BTCA members in those countries for details (see the BTCA member listing).

♦ ♦ ♦ ♦

WEST COAST BTCA CONVENTION

Al & Elaine Austin have graciously offered to host the 6th Annual West Coast BTCA Convention this year. The event is scheduled for Saturday, September 13th in Tacoma, Washington. We'll be meeting in the basement of the Epworth LeSourd United Methodist Church, on 710 S. Anderson Street, Tacoma, WA.

By now you should have received details in the mail with agenda, directions, and motel suggestions. If you have additional questions, please contact Al or Elaine at 15506 129th Ave Ct. East, Puyallup, Washington 98374, or call 253-841-7182, or email to elainebaustin@ivestnw.net. You can also contact Ron Carr if Al or Elaine are not available.

There will be interesting and informative presentations, lots of blow torch displays, and plenty of selling and trading...so please consider joining us for the day.

♦ ♦ ♦ ♦

East Coast BTCA Convention

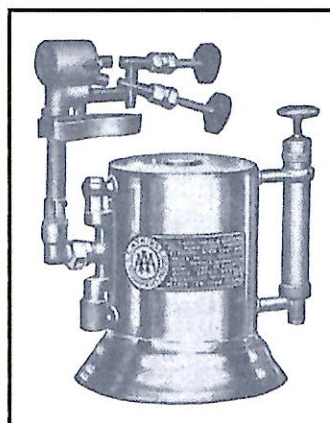
If there is sufficient interest, **Bob Scheiderman** has offered to host an East Coast event in October 2003. Bob and his lovely wife Darlene were hosts to the first East Coast event in September 2000 in Toms River, New Jersey.

For planning purposes, Bob would like to get an idea of anticipated attendance for the East Coast event tentatively scheduled for the Columbus Day weekend, October 11-12. Interested members should contact Bob as soon as possible at 30 North Gateway, Toms River, NJ 08753, or call 732-341-7462, or email to knottoday@worldnet.att.net.

♦ ♦ ♦ ♦

ATKINS

While going through an accumulation of blow torch literature, **Dr. Charles Smith** came across an ATKINS blow torch advertisement mixed in among Clayton & Lambert torches on the page. The information is in a 1925 Weed & Company Plumbing Tools & Supplies catalog page that displays numerous torches and plumber's melting ladles.



EC Atkins & Company
Brazing Torch
Manufactured by
Turner Brass Works
Circa 1925

The ATKINS is listed as a model #92 Brazing Torch and the article states: "The Atkins Brazing Torch is admirably adapted for brazing band saws, as the flame is a small concentrated pointed flame of intense heat which makes the braze in a few seconds."

We know that Atkins, or the EC Atkins Company was a major manufacturer of saws and related saw tool equipment. Located in Indianapolis, Indiana, Atkins, they competed with the Disson Company and were considered a leading manufacturer of silver steel saws and other wood working equipment. Atkins logo was, AAA, or ATKINS ALWAYS AHEAD.

The ATKINS #92 brazing torch has a unique articulating assembly in that it is operational only in the horizontal plane. Based on our examination of the catalog picture, and the fact that Turner also produced a Turner labeled model #92 with the identical articulating assembly, it is our learned opinion that Turner Brass Works manufactured the blow torch, and brand labeled it for ATKINS.

We also noted that Turner is also the only torch manufacturer that produced numerous models with articulating burner assemblies.



EC Atkins & Co.
AAA Logo
ATKINS ALWAYS AHEAD

For those of you that own **Dick Sarpolus'** book (and if you don't, then go out immediately and buy one!), *COLLECTIBLE BLOWTORCHES*, check out page 98 and also the cover photo. We believe that you may be looking at an ATKINS BRAZING TORCH.

According to Dick, his torch only is identified by the Turner trapeze logo on the pump handle and the words; "trade mark". Of course, it could also be a Turner model #92, but in most cases Turner applied other markings on their torches for identification.

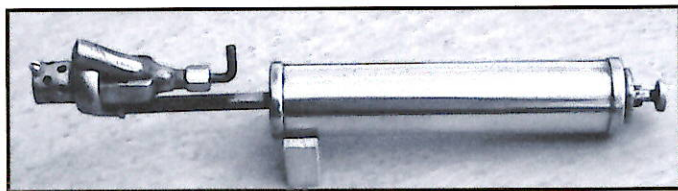
If anyone owns such a torch.... especially if it has an intact Turner or Atkins label, please contact us and advise what information you can provide. You may actually own an ATKINS brazing torch!

◆ ◆ ◆

Peterson-Plummer

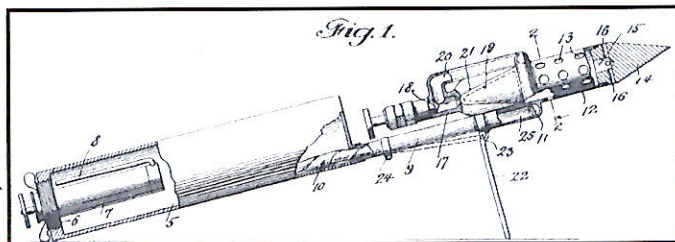
One of our members, **Keith Hawkins**, has uncovered another unknown US blow torch manufacturer, Peterson-Plummer Mfg. Co. During our communications with Keith, we were sure that he had a brand labeled Peterson-Plummer torch that was produced by the Everhot Co. However, after some investigation, we're fairly certain that Peterson-Plummer was indeed a blow torch manufacturer.

To add to our confusion, Everhot Mfg. Co. produced blow torches in Maywood, Illinois, and the Peterson-Plummer Mfg. Co. produced blow torches in Mayfield, Illinois, and we initially thought that both cities were one and the same. Actually, Maywood is a suburb of Chicago, and Mayfield is approximately 175 miles south of Chicago.



PETERSON-PLUMMER MFG. CO.
Mayfield, Illinois

The Peterson-Plummer torch looks almost identical to an Everhot, yet on closer examination, one quickly realizes the major differences in the burner assembly. The most apparent difference is the Peterson-Plummer torch does not have a drip cup, and the back portion of the burner assembly has an elongated portion with no vent holes.



PETERSON-PLUMMER MFG. CO.
Patented March 9, 1920

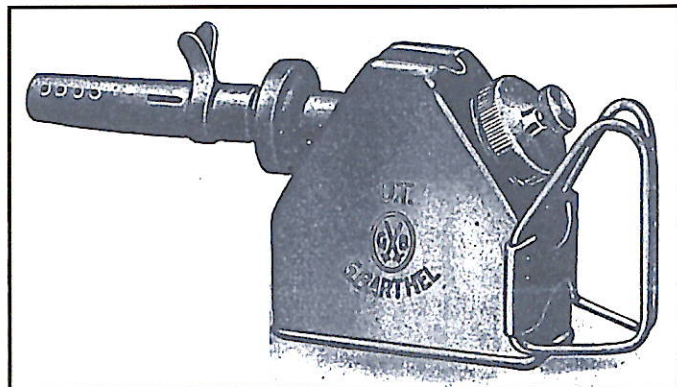
PETERSON CONT.

The Peterson-Plummer torch lists a patent date of March 9, 1920, and patent number 1,333,590. The inventor, Claude Padgett, devised a clever way of starting the Peterson-Plummer blow torch without the use of a drip cup.

The operator would pump up the fuel tank with a bit of air pressure, elevate the burner assembly, then open the fuel valve to release a small amount of fuel. The rear portion of the burner assembly was designed with a receptacle area that received and stored the released fuel. The operator would then light off the fuel and wait a few minutes until almost all the fuel was burned. When vaporization had occurred, the operator would then open the fuel valve and commence operation.

Thanks to Keith, we're pleased to add the Peterson-Plummer Mfg. Co. to our ever-growing list of US torch manufacturers.

◆ ◆ ◆ ◆



TYPE "UT" POCKET SOLDERING LAMP
THE "LITTLE WONDER" BLOW LAMP AND TORCH
Manufactured by BARTHEL

THE TORCH

Official publication of the Blow Torch
Collectors Association is published
three times per year.

Editor
Contributing Editor

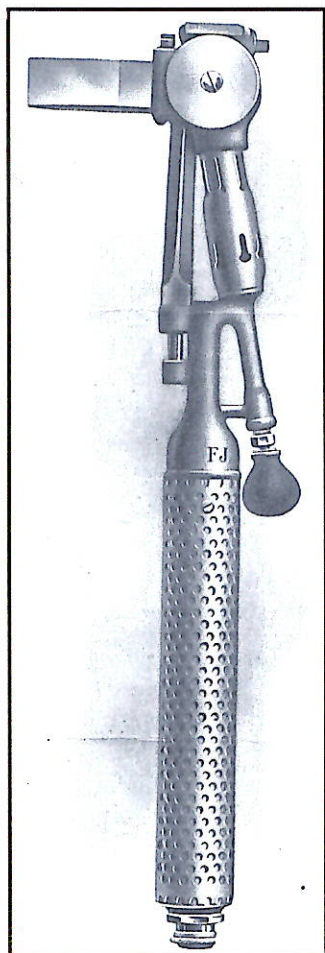
Ronald M. Carr
Graham Stubbs

THE PURPOSE of BTCA is to preserve the history of blow torches and related equipment, to encourage the identification, classification, and exhibiting of such equipment, also to promote the study and better understanding of operation, purpose, and application.

Membership in BTCA is open to any person sharing its interests and purposes. For membership information, write to: Ron Carr, 3328 258th Avenue SE, Sammamish, WA 98075-9173, email to: RMCarr@comcast.net, or by phone: (425) 557-0634.

THE TORCH encourages contributions from anyone interested in our purpose. Articles can be submitted in any format and should include supportive literature whenever possible. All submittals should be sent to Ron Carr at the above address.

No part of THE TORCH may be copied or reproduced without the written consent of BTCA.



French blow lamp
Manufactured by
FOUILLOUD

CLASSIFIED ADS

For Sale or Trade: **Lee Miller** has an enormous blow torch collection, over 3500 pieces, and is willing to sell and/or trade with other members. Anyone having an interest, contact Lee Miller, 1917 Colorado Avenue, Black Eagle, Montana 59414-1208, or call 406-453-4908, or email to modelltee1@aol.com.

For Sale: **André LeFrancois** has decided to liquidate his entire collection of approximately 100 torches. For those of you fortunate enough to view André's torch display at the 2002 BTCA west coast convention in Brooks, Oregon, will remember how great his torches looked after his incredible refinishing process. He would like to sell to one person and is asking \$3,000 for the entire lot. He would also prefer to sell to someone close enough to pick them up, since André is not too keen on packing and shipping 100 torches.... but I suspect that is negotiable. He also supplied us with a complete listing of his collection, and if you would like a copy, either contact him directly, or contact Ron Carr at RMCarr@comcast.net and he can email you a copy. You can contact André at 466 Evelyn Lane, Hayward, California 94544, or call 510-886-1478

For Sale: Approximately 50 blow torches, all professionally polished. I will sell individually or as any size group. There are a wide variety of sizes and types including numerous auto torches, and they range from the oldest to relatively new ones. Interested individuals should contact BTCA member, **Wilbur Bergerson**, 1403 Rosewood Lane, Alexandria, Minnesota 56308, or call 320-763-0551. All offers considered.

For Sale: My entire collection of 117 blow torches of all sizes and shapes. Many of the standard names; Bernz, C&L, Turner, Lenk, but also includes American Stove, Geo Diener, Shapleigh Hardware, Huff, Unique, Wall. There is a Wall auto grip flat military torch painted olive drab, and a large Hauck with a vertical burner. International labels include Vulcano, Buflam, Monitor, Burmos, Hawk, and Sievert. Must sell as a complete collection and will not break up to individual sales. I have a detailed listing of all torches and can provide photos when necessary. Interested parties contact Kenneth Wilson, 5322 SW Reeder Street, Topeka, Kansas 66604-2095, or call 785-273-5616.

Trades Wanted: **John Tingle** is interested in trading for US manufactured blow torches. He has an abundance of blow lamps and can provide many different models from numerous countries. John is located at Prospect House, 47 Wrington Road, Congresbury, North Somerset, England BS49 5AS, or call 01934 832267, or email to emily@alice13.fsnet.co.uk.

Wanted: **Charlie Smith** would like to purchase Hercules, Fulton, Merit, Dunlap, or Craftsman torches. They must have readable decals in good condition. Please send or email photographs and asking price to Dr. Charles C. Smith, Geological Survey of Alabama, 420 Hackberry Lane, PO Box 869999, Tuscaloosa, Alabama 35485, or phone 205-349-2852, or email to ccsmith@gsa.state.al.us.

The CLASSIFIED ADS is a supplement to *THE TORCH*, and is available for advertising to all members of the Blow Torch Collectors Association in good standing, at no charge. Advertising for all non-BTCA members is available on request. Contact Ron Carr, 3328 258th Ave. SE, Sammamish, WA 98075-9173, (425) 557-0634, or email at: RMCarr@comcast.net