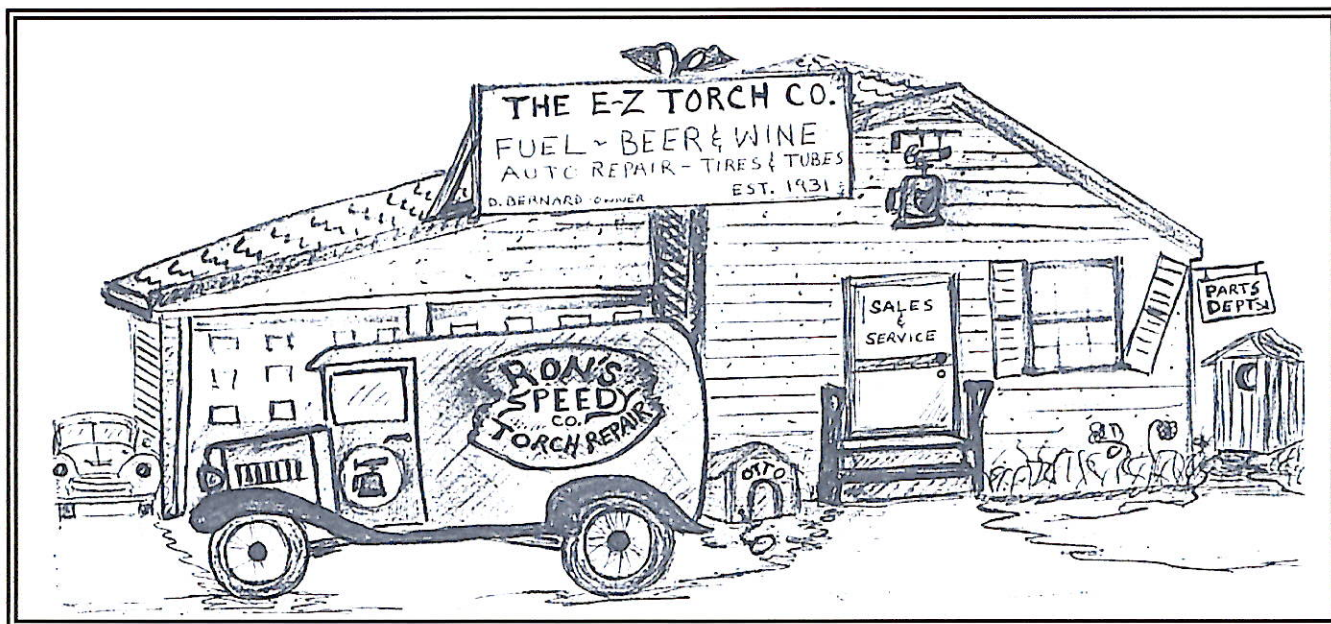


THE TORCH

Newsletter of The Blow Torch Collectors Association

- Issue #25 -

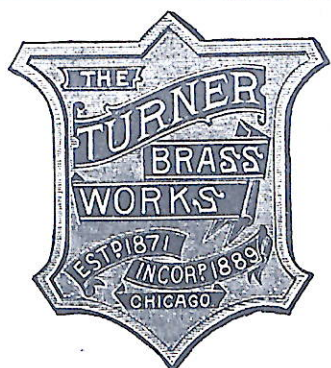
- March 2003 -



THE E-Z TORCH CO., See page 3

Lyon Conklin & Co. Inc.

See One Pint A Day, page 6



Early Turner logo

Circa 1894

Note absence
of gymnast

Provided by
Graham Stubbs

KNAPP, PAGE 8

STAR & BETZ, PAGE 7

CALL FOR PAPERS, PAGE 11

ODE TO THE TORCH, PAGE 6

NEW MEMBERS

Charles Denison, Council Grove, Kansas is a new member sponsored by his brother and BTCA member **John Denison**.

Martin Donnelly, Bath, New York is a 10-year collector with close to 100 torches in his collection. Martin is also an antique tool dealer.

Elton Eller, Onida, South Dakota, has been collecting torches for about 20 years and has amassed over 175 pieces. He decided that the old family blow torch, that was used to solder milk pails during the Great Depression, needed some company...more blow torches!

Ken Graham, Spring City, Pennsylvania is a 15-year collector with much of his collection displayed. Ken's grandfather was a plumber and tin roofer many years ago, and Ken inherited his old blow torch...the start of his collection.

John Lawler, Eau Claire, Wisconsin has been collecting torches for almost 15 years, and has always been impressed with their design, functionality, and functional look. *"They are a symbol of one of the many items that were manufactured with a great deal of pride, to last forever.... and were replaced by a disposable propane torch."* John also has a very large collection of whale oil lamps and a few large & small kerosene stoves.

Joe Peters (AKA Doc), Lancaster, New York owns Doc's Fabrication in Lancaster. In addition to Joe's blow torch collection, he also makes personal branding irons from old soldering irons. No wonder there's a shortage of soldering irons in the northeast!

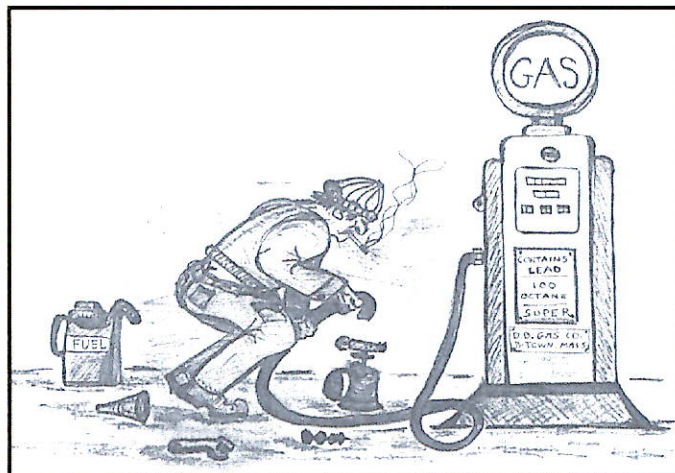
Rudy Poitras, Gorham, Maine, is what you might call a very avid blow torch collector. He started his collection just 2 months ago when he found his first torch at a local flea market, and he has not only accumulated 34 torches since then, but they are all polished and displayed in his family room.

Stan Slawnikowski, Milton, Wisconsin is a 10-year collector with approximately a 100 torch collection, and many are polished. Stan acquired his first blow torch years ago for removing paint from his house, then he added 99 more. He also has an assortment of soldering irons and melting pots.

Tim Szabo, Marietta, Ohio is a relatively new collector and started his collection last year when his mother gave him his first blow torch for a birthday present. It seemed like a logical present since Tim is already a collector of soldering irons, lead furnaces, and Coleman camp stoves, and...he's a plumber, and.... his father, grandfather, uncles and cousins were or are plumbers.

John Zilinskas, Arroyo Grande, California found his first blow torch at a garage sale about 15 years ago, and actually used it years ago to sweat copper fittings. He stopped using them for soldering and now just collects them.

WELCOME ABOARD NEW MEMBERS!



THE APPRENTICE #2

Dick Bernard has revisited The Apprentice again as a supplement to the front-page cartoon in issue #24. It seems that our apprentice is not only putting safety aside, but is almost mooning the world!

THE E-Z TORCH CO.

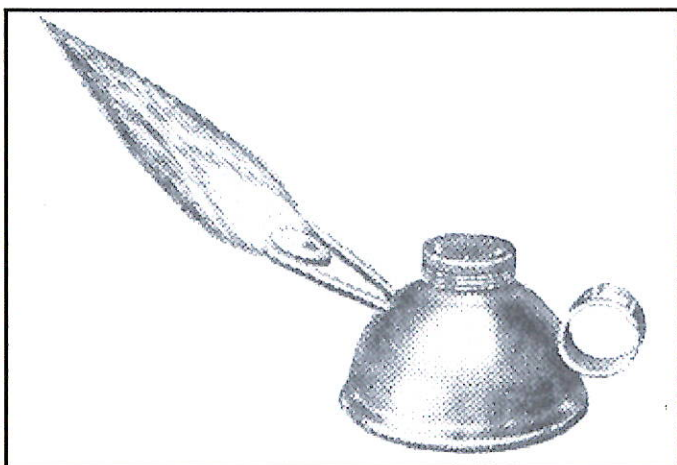
Dick Bernard has amused us again with his E-Z TORCH CO. cartoon on the front page. Considering the large number of blow torches that were in use during the 1930's and 1940's, it's believable that there were many facilities that repaired torches and sold spare parts, but most probably as a side business and not full time like the E-Z TORCH CO.

Note their high tech security system...Otto the dog. Dick said that Otto was not available during his sketching and was out in back watering a tree. Our many thanks to Dick for his contribution and creativity.

♦ ♦ ♦

NOTES FROM ALL OVER

Dr. Charles Smith sent in a catalog sheet from Buhl Sons Company that advertises a RAPID-FIRE BLOW TORCH, model number 10. It appears to be made with very lightweight materials, is relatively small, and one can only guess that it must get very hot and difficult to handle if used for long periods of time.



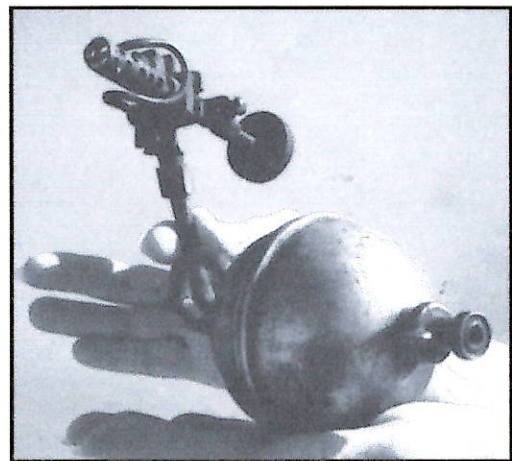
RAPID-FIRE BLOW TORCH
Submitted by Dr. Charles Smith

A similar blow torch is listed in a 1925 Montgomery Wards catalog, and is advertised as a JIFFY BLOW TORCH. We cannot show a picture of the JIFFY torch since the copy we have is of very poor quality and would not reproduce.

The JIFFY torch appears to be almost identical to the RAPID-FIRE, except the JIFFY has an attachment holder for a soldering iron. We would like to hear if anyone has a RAPID-FIRE or a JIFFY in his or her collection...let us know!

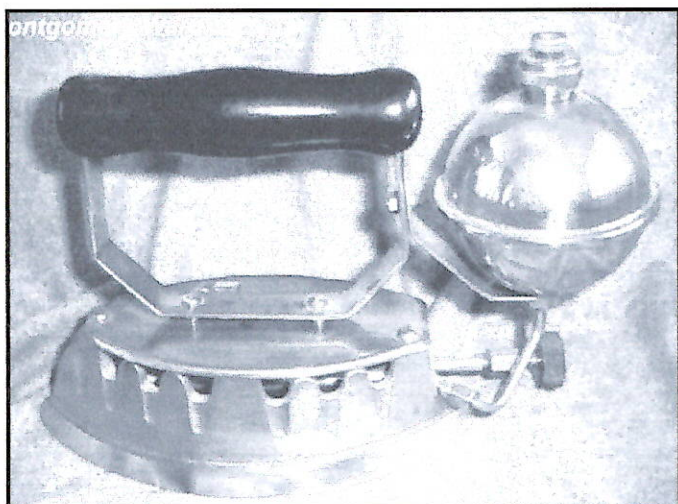
We heard from our Down Under member, **Mal Mutimer**, regarding patents. He successfully downloaded some US patents using our instructions without any problems...or cost. It seems that patent copies from the Australian Patent Office cost \$15 each, and it takes up to 4 weeks!

For instructions on obtaining free copies of US patents, reference THE TORCH, issue #23, page 9.



Dave Schulte's unknown blow torch

A mystery was solved on an unknown torch that was reported in THE TORCH, issue #24. **Dave Schulte** sent in a photo of a very unusual looking blow torch...at least that's what we all thought it was. But then we heard from BTCA member, **Peter Schmiedeberg**, a blow torch collector, but also a gasoline iron collector. It seems that Dave's unusual blow torch is actually the fuel tank and burner from a gasoline iron, probably a Montgomery Wards model, see page 4. Another mystery solved!



MONTGOMERY WARD GASOLINE FLAT IRON
Submitted by Peter Schmiedeberg

Ron Johnson Jr. called not long ago and gave us a heads up on a few new torch manufacturers that he has discovered in his collection. While Ron has been an avid torch collector for some time, his dad was also a torch collector, and Ron inherited his Dad's collection when his father passed away.

The first one Ron uncovered is a **BURROWS METAL MFG. CO.**, New York, NY small alcohol torch with a picture of a house on the label.

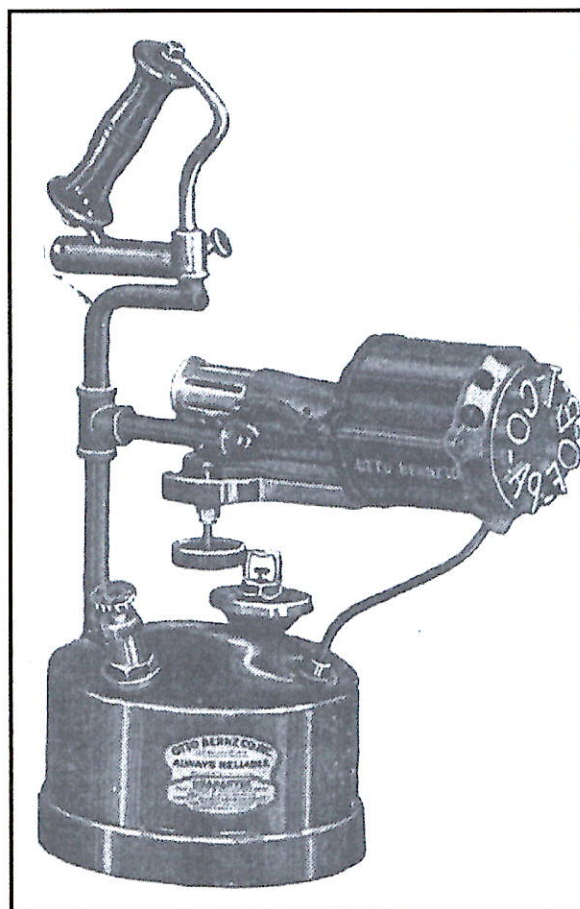
Another new name, **HERMAN PIETSCH**, New York, NY and is also a small alcohol torch. It appears to have a trademark of "NEVER OUT" and is also stamped "PATENTED".

The third one is a **GOSS GAS CO.**, Pittsburgh, Pennsylvania and is a conventional blow torch stamped with model #300T. We'll add all three names to our ever-growing manufacturers listing, and perhaps in the near future Ron will send photos so we can examine them.

Mel Olson and **Curt Pederson** put together an impressive blow torch display at the Otter Tail County Historical Society in Fergus Falls, Minnesota last December. They had in excess of 60 torches displayed in a variety of sizes and styles. They also donated a circa 1921 brass blow torch that was given away at a drawing.

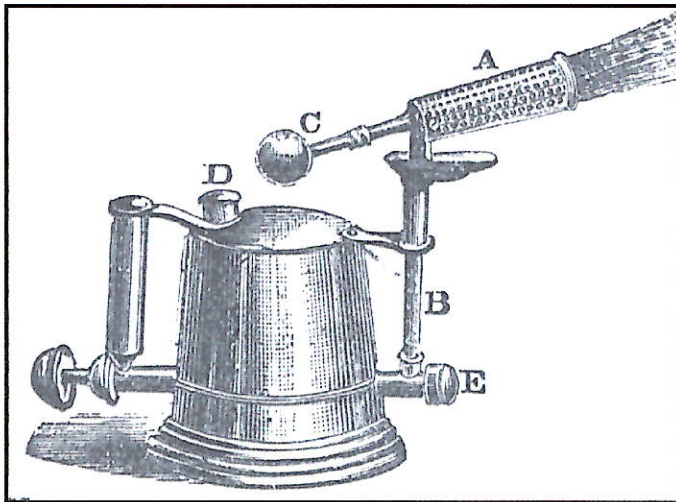
Graham Stubbs sent in an **Otto Bernz** Jobber's Price List dated April 15, 1937, and the list reflects Jobbers Price, Suggested Jobbers Resale Price, and List Price. What is so unusual, in addition to the very low prices, is that almost ½ of all the torches listed could burn either gasoline OR kerosene, and a kerosene burner block was included with the torch if requested. You might want to check your Otto Bernz torches for that extra burner block. Look on the inside of the filler plug, many were mounted there.

Graham also included information on a very elaborate device to brand both ends of wooden barrels. It's doubtful that any member will ever discover one of these because of the immense size! Included in the literature were photos of three sizes of portable branding blow torches; model numbers 100, 200 & 300.



OTTO BERNZ BRANDING TORCH
MODEL NO. 300
Submitted by Graham Stubbs

Graham submitted a catalog sheet from HAMILTON & CO., ENGLAND. The 1894 catalog displays a great line drawing for WELLINGTON'S PATENT AUTOMATIC TORCH FOR SOLDERING AND PAINT REMOVING. The selling price was listed at 27 shillings, 6 pence.



Wellington Automatic Torch
Circa 1894
Submitted by Graham Stubbs

Graham also found a business envelop with a Turner Brass Works logo. The letter was mailed from Turner's Chicago location on May 14, 1894 and was mailed to the United States Brewing Co. of Chicago. What's so unusual is that this logo is dated well before the Turner gymnast logo that we are all familiar with today. See the cover page for photo.

And lastly, Graham has started additional research on blow torch patents to uncover patents not found by Ron Carr's patent research. To date he has discovered an additional 25 torch patents not listed in our patent inventory. Many are of the Self Heating Soldering Iron type and are quite interesting. We will republish the patent listing later this year, and will feature a few of the newly discovered patents in future newsletters. As you can see...Graham has been a busy man!

Michael Hanson sent in comments referenced in a book. The author is talking to a

fisherman somewhere in Michigan: *"I usually fish for whatever is running.... perch, steelhead, chub, and in the winter for pike. Most of my life I worked in Detroit as a machinist turning parts for gasoline blow torches. Today, kids don't know what a blow torch is, but the torches were beautiful things that built the country. Precision brass fittings machined to critical tolerances. They blew like the thunder and ran like steam engines, and they lasted forever because they were designed and built, and not just assembled."*

The throwaway propane bottle put us out of business. Those things are designed as junk and built accordingly. But the true blow torch.... a son inherited his Dad's torch. I loved the work because I knew somebody would keep what I made."

We believe the fisherman would be proud to know that the blow torches he painstakingly machined and built are being collected today!

Lloyd Weber sent in a note quite a while ago as follows: *"I buried my father-in-law today. He was 83 years old, and truly a unique man. He only had a seventh grade education but kept learning his entire life as a bricklayer, mechanic, avid vegetable gardener, mushroom hunter, and tree lover."*

He gave me my first blow torch in October 1999.... it was his own torch. I polished it and gave it back to him that Christmas with his name, Harry Line, and under that, Man of All Trades, engraved on the fuel tank.

Tonight, in his honor I lit up my first torch, a pint size C&L #700A. I used a Bernzomatic propane torch to heat up the burner, and then opened the valve and away it went. After the dust burned off, a nice blue flame shot out and I just stood there and watched.... and thought of Harry."

Chris Bayer put a large number of old catalog sheets on a CD and submitted the information to us recently. We're still sorting through all of the data on the CD to determine if he has uncovered any unidentified blow torches or torch manufacturers.

◆ ◆ ◆ ◆

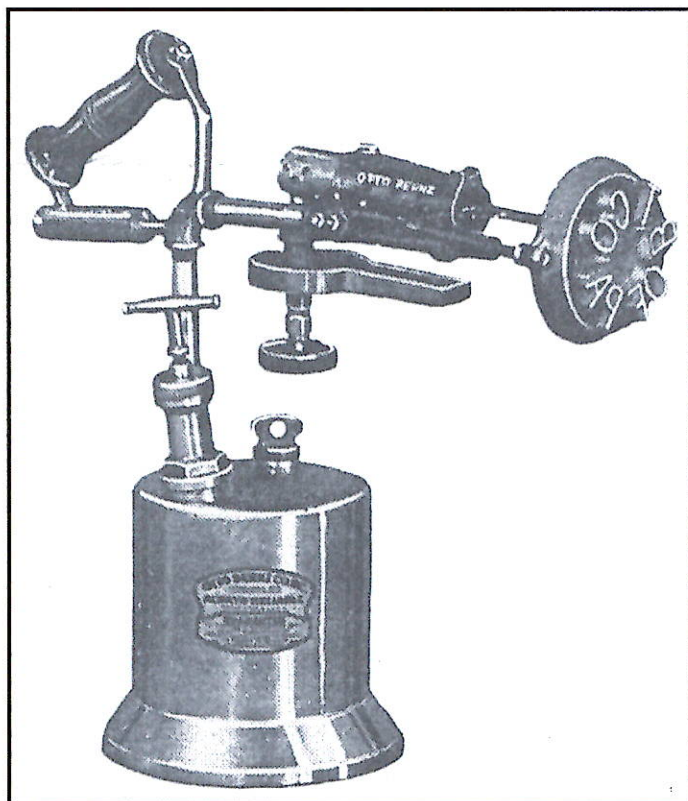
BAKELITE REMINDER

Blow torch hunters are occasionally duped into purchasing a blow torch with Bakelite parts that is advertised as originating from the late 1800's. As a reminder to all blow torch hunters and especially those bidding on ebay, BEWARE OF FALSE STATEMENTS!

The inventor, Hendrick Baekeland, created the substance, Bakelite, in his Yonkers, New York laboratory in 1907, and the material was not mass-produced into useful products until early 1909.

Blow torch manufacturers found the material useful due to its durability and low heat transfer properties.

♦ ♦ ♦ ♦



Otto Bernz Branding Torch
Model number 200
Fuel Capacity, 1 gallon
Submitted by Graham Stubbs

ODE TO THE TORCH

By Bill Bennett

The tools they used in bygone days
were always near at hand,
Tuned and oiled, kept in a shop
faithfully they served man.

They shall not be forgotten, though
you don't use them yourself,
Cleaned and polished, gleaming brass
sit proudly on your shelf.

Yet they are still serving us,
though in a different way,
They sit there very quietly,
and brighten up your day.

In addition to the above poem, Bill offered a story of a recent experience. *"My son and I were on a fishing trip on the Snake River in Oregon, when he became ill. The nearest clinic was in Halfway, Oregon, some distance away. When we arrived at the clinic, it was quickly determined that the illness was not serious. While the doctor and his staff were attending to my son, I walked across the street to an antique store.*

There I found a mint LENK alcohol torch in an original box, with an instruction sheet, and an extra wick...all for \$9.95. My son recovered from his illness, and I had another torch to add to my collection."

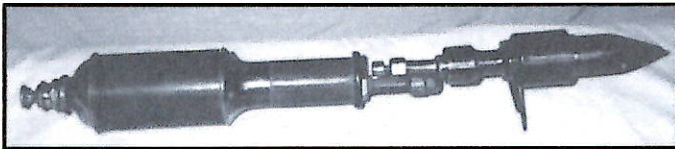
♦ ♦ ♦ ♦

ONE PINT PER DAY...

That's how the Lyon Conklin & Co. Inc advertised their NEW MARVEL Self-Heating Soldering Iron back in 1916.

One of our newest members, **Elton Eller** is the proud owner of a Lyon Conklin NEW MARVEL torch. There appears to be no mention made of the Lyon Conklin Co. anywhere on the torch, and the only data stamped is:

**NEW MARVEL, Balto. MD,
Pats Pending**



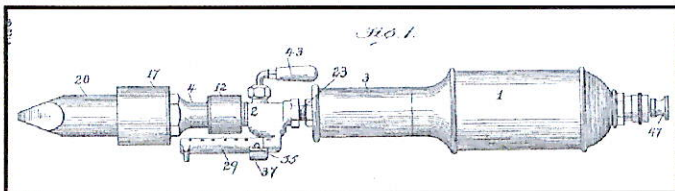
Lyon Conklin "New Marvel"
Self-Heated Soldering Iron
Circa 1913-1914
Submitted by Elton Eller

The only information we have on the L. Conklin Co. is from a Metal Worker, Plumber, and Steam Fitter trade magazine ad dated March 10, 1916. Their ad reads: *Just think of it.... one pint a day. That's all it takes to use this New Marvel Self-Heating Soldering Iron a whole day. It is always ready for work. Flame controlled. Pump is in the tank. Burns well in any position. Can not explode and will not blow up."*

Congratulations to Elton for not only joining BTCA, but for having the only known Lyon Conklin NEW MARVEL torch!

And talk about a coincidence....**Graham Stubbs** uncovered the patent for the L. Conklin torch during his recent patent search. The inventor, George J. Clautice, assigned the patent to Lyon Conklin & Co., so it's assumed that George was an employee of the company.

Patent number 1,102,997 was issued on July 7, 1914, and since Elton's NEW MARVEL was produced with "Pats Pending", it's safe to say that the torch was produced prior to July, 1914, but after the application date of June 30, 1913.



Lyon Conklin Self-Heating Soldering Iron
Patent number 1,102,997 dated July 7, 1914

We believe we may have also identified the name source of the NEW MARVEL torch. The only other known L. Conklin patent is # 1,080, 644 and

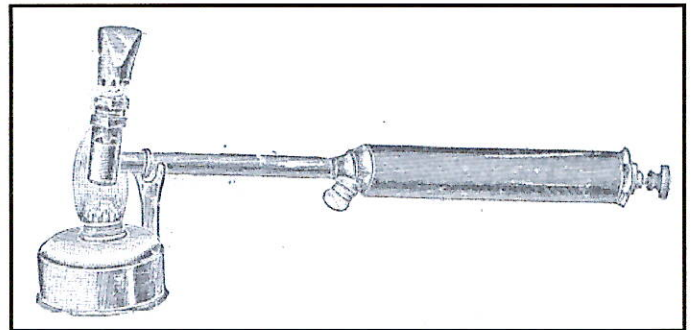
dated December 9, 1913. The inventor was Roy W. Marvell, and since Roy assigned his patent to Lyon Conklin Co., we assume that Conklin employed him. It's an assumption on our part, but we believe that Conklin named his torch after Roy Marvell...either that, or it's one heck of a coincidence.



STAR & BETZ

Thank you **Maurice Jernstedt** for sending in information about two very unique torch devices.

The first item is a BETZ AUTO-CAUTERY, is listed as "The Most Efficient and Successful Cautery Ever Invented", and was manufactured by the Frank S. Betz Co., Hammond, Indiana.



BETZ AUTO-CAUTERY
Submitted by Maurice Jernstedt

The device looks like a Self Heated Soldering Iron, but on closer examination, one can see that the burner assembly is quite different. The auto-cautery uses filtered chemically pure Squibb's sulphuric ether as fuel. After the unit is filled with sulphuric ether, the "burner head" is heated over a portable Bunsen burner for a few minutes to vaporize the ether, and is similar to the operation of a conventional blow torch. When the ether is sufficiently vaporized, the valve is opened and the Bunsen burner ignites the vapor. The device burns with a bright violet flame.

We hope that this device was just used to cauterize animals! We will add BETZ to our manufacturers list, and identify it as an ether fueled auto-cautery device.

The second article that Maurice sent in was by The Ambler Saw Manufacturing Co., Natick, Massachusetts and identified as the "STAR" BRAZING LAMP AND FORGE. It appears that the unit was specifically designed to repair different size band saw blades.

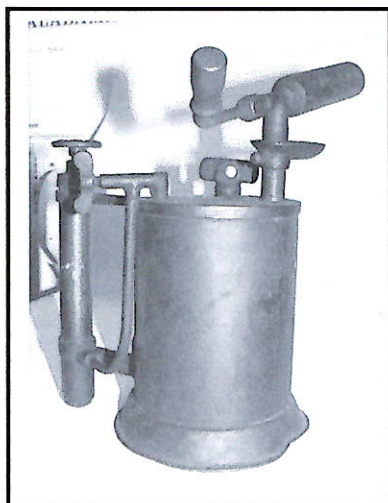
The unit is permanently mounted inside a wooden box that includes a bellows mechanism and a burner assembly with clamps on either side to hold the two pieces of saw blade. The burner is fueled by kerosene, and the brazing process also utilizes borax paste, charcoal, and a small piece of sheet brass.

We'll also add AMBER to our manufacturers list, and identify it as a band saw brazing device.

◆ ◆ ◆

KNAPP

One of our members, **Dr. Charles Smith** acquired a KNAPP blow torch late last year on ebay for an undisclosed amount. In addition to "KNAPP", the only other information stamped on to the torch are the letters "NY". We have no information on KNAPP other than we assume they manufactured blow torches and were located in New York.



Knapp Blow Torch
Submitted by Dr. Charles Smith



Top of pump handle,
KNAPP NY

The Turner Brass Works produced a similar blow torch during the same period, and there is a US patent, number 415,613, that looks exactly like the KNAPP and Turner torches. If we had to guess, we would put our money on it being a Turner patent since the inventor, W.P. Butler was from Chicago...the same location as Turner during that period of 1889.

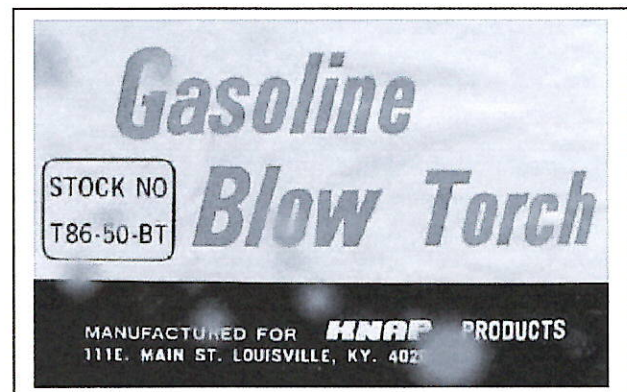
So it's conceivable that Turner produced the torch for KNAPP, but for now we will retain KNAPP as a manufacturer. If you have a KNAPP torch, please let us know.



KNAP PRODUCTS
BLOW TORCH

Brand labeled by
Sakae Fuji

Image sourced
from ebay



KNAP PRODUCTS LOGO

An interesting coincidence...there was also a **KNAP Products Co.** that distributed blow torches under their label in Louisville, KY, and they sourced their blow torches from Japan, most probably **Sakae Fuji**. We estimate that KNAP were distributing their torches in the late 1940's and early 1950's.

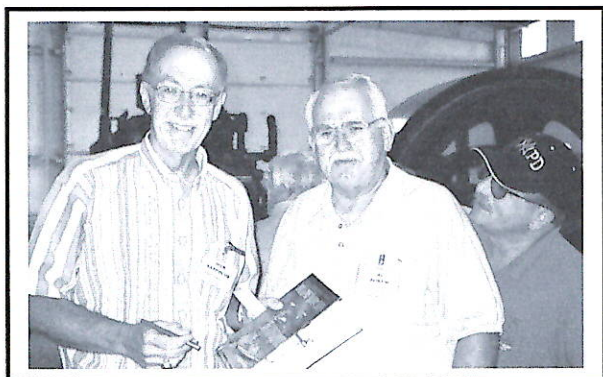
◆ ◆ ◆

East Coast BTCA Convention

Bob Scheiderman has offered to host an East Coast event in October 2003 in New Jersey. Bob and his lovely wife Darlene were hosts to the first East Coast event in September 2000 in the Toms River, New Jersey area. This year's event will be held in the VFW building in Toms River, and attendees can expect Bob to again cook up some of his famous Barnegat Bay clam chowder.

For planning purposes, Bob would like to get an idea of anticipated attendance for the East Coast event tentatively scheduled for the Columbus Day weekend, October 11-12.

Interested members should contact Bob as soon as possible at 30 North Gateway, Toms River, New Jersey 08753, or call 732-341-7462, or email to knottoday@worldnet.att.net. **Remember....your participation makes it all happen!**



5th ANNUAL BTCA CONVENTION, BROOKS, OREGON
L to R: Dick Sarpolus, Al Austin, Larry Fields

West Coast BTCA Convention

Plans are underway for the 6th Annual event on the West Coast sometime in September. The location has not been firmed up, however it will most probably be held in Oregon or Washington. As soon as the final details are settled, we will contact each member by mail with all of the pertinent information.

As we did last year, we are looking for attendees that are willing to present torch related information as part of the agenda. If you are interested, please contact Ron Carr at 425-557-0634 or email to RMCarr@comcast.net.

♦ ♦ ♦ ♦

HYDROCARBON BURNER CO

Lloyd Weber recently sent in photos of a Hydrocarbon Burner Co. blow torch. What's so unusual about this torch is it's European style design; the telltale burner assembly, drip cup, and the wing nut adjacent to the filler cap.



HYDROCARBON BURNER CO., KHOTAL

There are three patents stamped into the fuel cap and on one side of the fuel tank the words KHOTAL and TRADE MARK are also stamped. On the opposite side is stamped PATENTED, THE HYDROCARBON BURNER CO, NEW YORK, USA.

We have very little information on the Hydrocarbon Burner Co. and can only assume that they "adopted" their design from across the Big Pond.

♦ ♦ ♦ ♦

MORE INSTRUCTIONS

And the blow torch instruction sheets just keep pouring in!

Lloyd Weber provided instructions on the DOWNEY GRAVITY FEED blow torch.

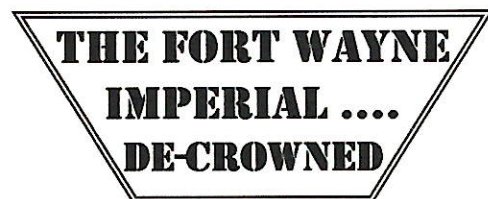
Dr. Charles Smith recently purchased a Clayton & Lambert model #252, and sent in a copy of the operating instructions that also cover model #238.

Graham Stubbs submitted operating instructions for Coleman torches, covering model numbers 91, 92, 101, 102, 151, 152, 201-4, 251 & 252.

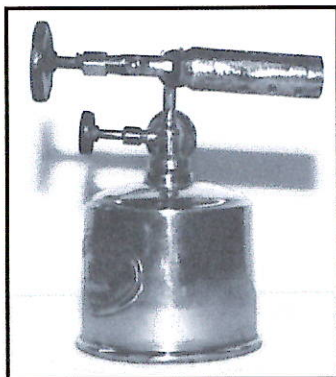
Irv Vogel sent in operating instructions for DUNLAP torches, model numbers 5377 and 5426, and FULTON torches, model numbers 5424 and 5427.

Remember that copies are available at no cost. Send a SASE to the BTCA Sammamish address and identify the specific instruction sheet. If you request more than one, please allow for additional postage.

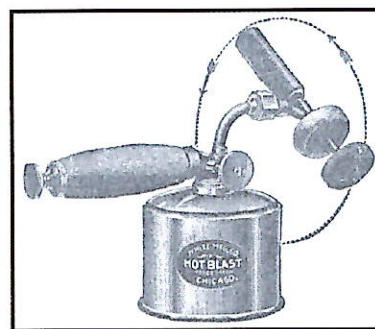
♦ ♦ ♦



We reported on a new torch manufacturer in *THE TORCH*, issue #22, and on page 5, *IMPERIAL TWO*. **John Jaress** submitted his photos of what appeared to be a new manufacturer, the *IMPERIAL LAMP CO.*, Fort Wayne, Indiana, but John is having second thoughts on the subject.



IMPERIAL LAMP CO.
Front view with cork covered air pump
Photo submitted by John Jaress



Turner/White Jewelers & Dentists torch
Model number 68

It seems that while perusing the new Turner Brass Works index, he noticed the Turner/White #68 Jewelers' and Dentists' torch on page 44. His Imperial Lamp torch looks identical to the Turner/White #68, except John's torch is missing the drip cup.

John will continue to research the Imperial Lamp Co. label and will report back to us on his findings.

♦ ♦ ♦

THE TORCH

Official publication of the Blow Torch Collectors Association is published three times per year.

Editor
Contributing Editor

Ronald M. Carr
Graham Stubbs

THE PURPOSE of BTCA is to preserve the history of blow torches and related equipment, to encourage the identification, classification, and exhibiting of such equipment, also to promote the study and better understanding of operation, purpose, and application.

Membership in BTCA is open to any person sharing its interests and purposes. For membership information, write to: Ron Carr, 3328 258th Avenue SE, Sammamish, WA 98075-9173, email to: RMCarr@comcast.net, or by phone: (425) 557-0634.

THE TORCH encourages contributions from anyone interested in our purpose. Articles can be submitted in any format and should include supportive literature whenever possible. All submittals should be sent to Ron Carr at the above address.

No part of THE TORCH may be copied or reproduced without the written consent of BTCA.

A CALL FOR ILLUSTRATED INFORMATION

Illustrated lists of Bernz, C&L, Turner and the Sears brands (Craftsman, Dunlap, Fulton, Hercules & Sears) have been published in past issues of "The Torch". BTCA members are urged to submit any illustrated materials, which would expand or supplement those listed below, for a final "omnibus" list of the other makes /models. Please submit any and all information to BTCA or Graham Stubbs.

Aeroil

9, 10, 16, 17

Ashton

1, 2, 3, 4, 5, 6, 7, 8, 9, 10, 11, 12, 13, 14, 15, 16, 17, 18, 20, 21, 23, 42, 43, 44, 45

Atlas Brass Works

Belco / Belknap

Blue Blast 382, Eagle, 2200, 2300, 2400

Best Street Light

50

Birk Mfg. Co.

Brookins

Burgess Soldering Furnace Co.

Soldering furnace

Carleton

Climax

Coleman (Canada)

91, 92, 101, 102, 151, 152, 201, 202, 203, 204, 251, 252

Detroit Torch

1, 4, 20, 22, 37, 102

Diener (Torrid)

2, 6, 7, 14, 50, 51, 250, 252

Dixon

Purdy (small), Purdy (Large), Simplicity, 1, 2, 3, 4

Dominion (Canada)

500, 501, 502, 503, 504, 505, 506, 507

Double Blast Co.

Fire pot

NC Downey Mfg. Co.

Everhot

10, 20, 30, 50, 110, 111, 115, 750, 900, 1100, 1200

Gate City

Brazing torch

Hades

H150 blowpipe or torch

Harmic (Besjet)

1, 2

Hauck

Little Giant, Giant Glider, Hercules, Vulcan, 1-S.C., 7, 10 horiz / vert. 14, 15, 16, 140, 150, 160, 211A, 212, 213, 214, 249, 250, 251, 380, 381, 382, 383, 384, 385, 386, 387, 388, 389, 390, 463, 464, 465, 917

Hibbard, Spencer, Bartlett

Cruso

Hoskins

Blast lamp

Huffman

Giant

Humboldt

Invincible

Justrite

29, 39

Khotal

Blast lamp

Klein

Staysalite lineman's torch, 3227, 3426

LaPine Scientific

Alcohol burner

Lenk

7, 10, 14A, 15A, 17, 19, 20, 24, 30, 32, 35, 40, 50, 66, 104, 105, 108, 125, 205A, 350, 600, 601, 644, 645

Livingston

Spitfire

Lyon Conklin

New Marvel

Modern Metal Products (Jim Dandy)

80, 123, 124, 200

Montgomery Ward

84X5220, 84X5221, 84X5222, 84X5224, 84X5226

Naab

Gas-electric blow torch

National Safety

100

Optimus (USA Distributor)

301R, 321, 386, 465, 495

Pako Supply Co.

Pumpless

Peerblow

Simplex, Duplex

Phoenix

Prest-O-Lite

Torch

Preway

50, 50P-11, 51, 51P-11, S45, S45P-10, S45P-11

Pumpless

Patents only

Quickmeal

Soldering furnace

Safe-Jet

Rocket #1

Sievert (USA)

H, HLL, HSL1, HSL2, HSL3, HSL4, KR large, KR small, R, RLL, S, SBP, U, 1, 2, 3, 4

Solderall

Solderall blow torch

Sparton

Imp

Union Heater Supply

Diamond

Unique

0, 1, 3, 7, 102, 103, 105

Vibert

Dual jet torch

Volcano

1, 2, 3, 4, 4A, 4B

Wakeman

Patents only

Wall Superior Products

8, 10, 21, 28, 31, 36, 37, 38, 41, 48, 49, 49K, 331S, 344, 410

Welch Scientific

Dangler, Baby

Wellington

Automatic Torch

CLASSIFIED ADS

For Sale: A pint-size Otto Bernz blow torch, model #58 stamped into the pump knob. The torch is in excellent condition and includes a small brass windscreen. The air pump is in the handle, and the entire torch is made from brass except the drip cup and fuel tube. Photo available on request. Make your offer to Bernard Taresco, 204 Coldbrook Road, Timonium, Maryland 21093.

For Sale: My entire collection of 68 blow torches, of which 4 are small alcohol torches. The 64 pieces are from pint to ½ gallon size, all professionally polished. Some are quite old, late 1800's, and there are numerous auto torches. I have \$2200 invested, and will consider all offers. Please contact Wilbur Bergerson, 1403 Rosewood Lane, Alexandria, Minnesota 56308, or phone 320-763-0551.

For Sale: Two blow torches; Clayton & Lambert and Otto Bernz, both are quart size. The C&L has a red wood handle, fills from the bottom, includes a soldering iron hook and windscreen, and the fuel tank is brass. The fuel knob is broken. The Otto Bernz is a quart size, fills from the top, and the soldering iron hook is missing. Make best offer to William Pushman, PO Box 158, Vails Gate, NY 12584-0158, or call 845-561-1915 at 6:00 PM to 10:00 PM any day.

For Sale: My entire collection of 117 blow torches of all sizes and shapes. Many of the standard names; Bernz, C&L, Turner, Lenk, but also includes American Stove, Geo Diener, Shapleigh Hardware, Huff, Unique, Wall. There is a Wall auto grip flat military torch painted olive drab, and a large Hauck with a vertical burner. International labels include Vulcano, Buflam, Monitor, Burmos, Hawk, and Sievert. Must sell as a complete collection and will not break up to individual sales. I have a detailed listing of all torches and can provide photos when necessary. Interested parties contact Kenneth Wilson, 5322 SW Reeder Street, Topeka, Kansas 66604-2095, or call 785-273-5616.

For Sale: A PENNCRAFT GASOLINE TORCH, quart size with steel fuel tank, Bakelite fuel valve, painted blue handle, and PENNCRAFT decal in good condition. Markings include JC15A and T1732. Only interested collectors should contact Bert Bratkowsky, 2777 Len Drive, Bellmore, New York 11710, or call 516-781-8859.

For Sale: Approximately 105 blow torches, all highly polished and in excellent condition. Contact Andre' LeFrancois for details, 466 Evelyn Lane, Hayward, California 94544, or call 510-886-1478.

Trades Wanted: John Tingle is interested in trading for US manufactured blow torches. He has an abundance of blow lamps and can provide many different models from numerous countries. John is located at Prospect House, 47 Wrington Road, Congresbury, North Somerset, England BS49 5AS, or call 01934 832267, or email to emily@alice13.fsnet.co.uk.

Wanted: Charlie Smith would like to purchase Hercules, Fulton, Merit, Dunlap, or Craftsman torches. They must have readable decals in good condition. Please send or email photographs and asking price to Dr. Charles C. Smith, Geological Survey of Alabama, 420 Hackberry Lane, PO Box 869999, Tuscaloosa, Alabama 35485, or phone 205-349-2852, or email to ccsmith@gsa.state.al.us.

For Sale: A must item for all torch collectors! One of our members, Mark Pedersen, is selling replacement wooden handles with a brass collar for the older Turner, O. Bernz, and Clayton & Lambert torches. It is the small wooden handle with a small brass collar that slips onto the steel shaft for the fuel control valve. A majority of the original wooden handles are usually broken or missing which detracts from the beauty and value of the torch. You'll need to specify either a ¼ or 3/16th-hole size, and either black or natural finish. Price is \$3.50 each plus postage. Contact Mark Pedersen, 6112 SW High, Mill City, Oregon 97360, or call 503-897-3101.

The CLASSIFIED ADS is a supplement to *THE TORCH*, and is available for advertising to all members of the Blow Torch Collectors Association in good standing, at no charge. Advertising for all non-BTCA members is available on request. Contact Ron Carr, 3328 258th Ave. SE, Sammamish, WA 98075-9173, (425) 557-0634, or email at: RMCarr@comcast.net