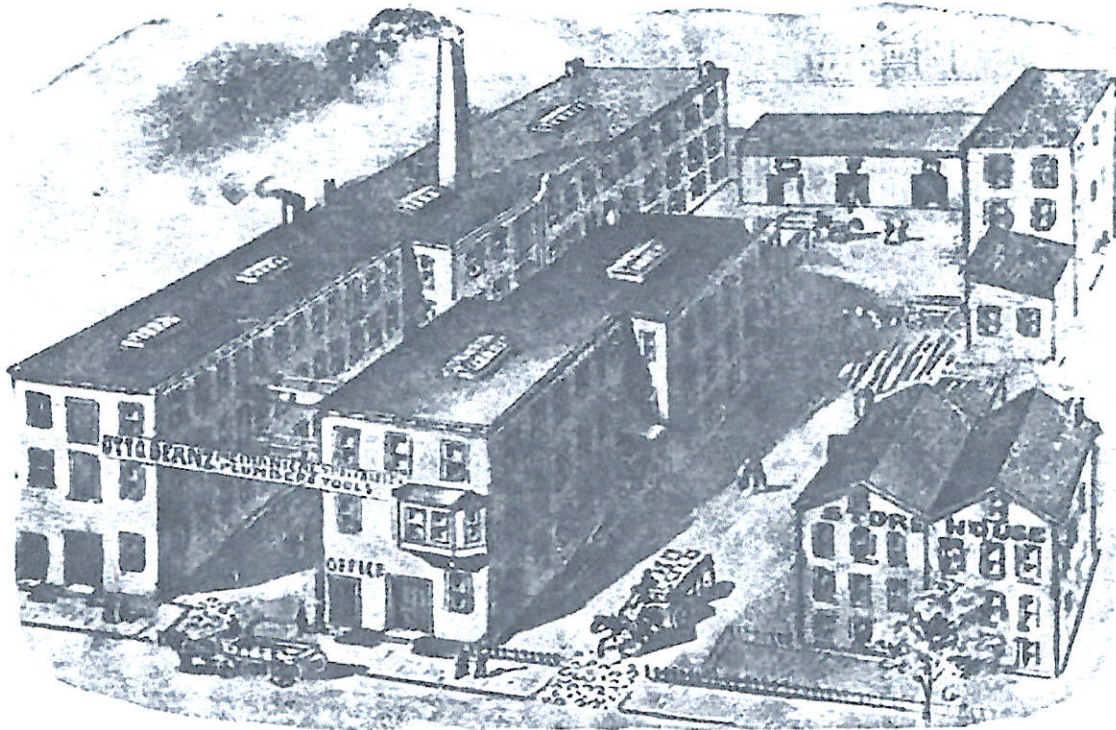


THE TORCH

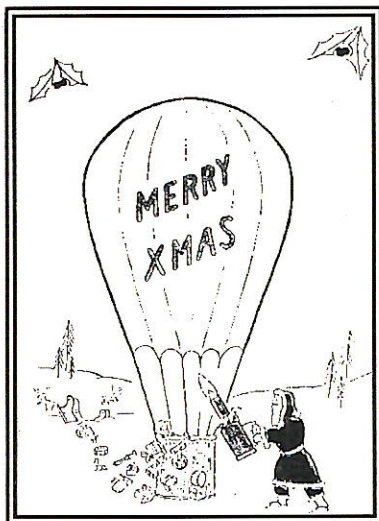
Newsletter of The Blow Torch Collectors Association

- Issue #21 -

- December 2001 -



The Otto Bernz factory, Newark, New Jersey, circa 1907. (See Bernz history on page 6)



The 3rd
Annual
Holiday
Creation
by Les
Adams

Other features in this issue:

BTCA 4th Annual Convention –
Page 9

Otto Bernz blow torch index –
Page 5

NEW MEMBERS

Bill Bennett, Springfield, Oregon, is actually our 2nd Bill Bennett, and should not be confused with the Bill Bennett from North Carolina, (they are not related). Bill remembers using torches as a boy with his dad, making sinkers and doing repair work. He started collecting torches in the 1970's, and renewed his collecting interests after purchasing Dick Sarpolus' book on Collectable Blow Torches.

Ron Burns, Salem, Oregon visited the BTCA 4th annual convention in Brooks, OR, and decided to join our group.

John Deatherage, Las Animas, Colorado, has been collecting torches for many years, *"being a farmer/rancher...there have always been blow torches around the ranch. Of course, propane/acetylene torches and electric welders have replaced them, but being a natural pack rat, nothing ever gets thrown away! I had a friend who was an auctioneer, and when he saw any torches, he would buy them for me for next to nothing. I would also purchase torches at antique stores, and many friends and neighbors would give me torches to add to my collection."* John has approximately 150 torches to date, and many are displayed above the kitchen cabinets. His wife is encouraging him to put up some shelves in his office and get those "dust collectors" out of the kitchen!

Bo Escobar, is a new member from Las Vegas, Nevada.

Rocky Fowler, Tiffin, Ohio, is a 15-year collector with a modest collection of polished torches displayed in his office and he also displays them at the County Fair. Rocky says that he collects everything.... he's what you would call an avid collector!

Fred Goble, Mission Viejo, California, is new to torch collecting and began 6 months ago when he saw his first one in an antique shop. *"I get a real kick out of tinkering with old mechanical items and tools, and find that this is one collectable item that is still within financial reason. I also collect antique bottles, and my biggest problem seems to be finding room to display everything!"*

Bruce Hagemann, Plano, Texas, was sponsored into BTCA by his father-in-law, and BTCA member, **Bob Mitchell**.

George Holler, Deming, New Mexico, started his torch collection early in 2001. *"I am a retired plumber, and I used a few blow torches way back when I started in the plumbing business in 1936. I also had the opportunity to use a few torches while in the army and stationed in England during WWII. I am working on a very limited budget, and buy most of my torches on ebay. It's hard bidding against other collectors with unlimited funds, but every once in a while I get lucky and get a sleeper."*

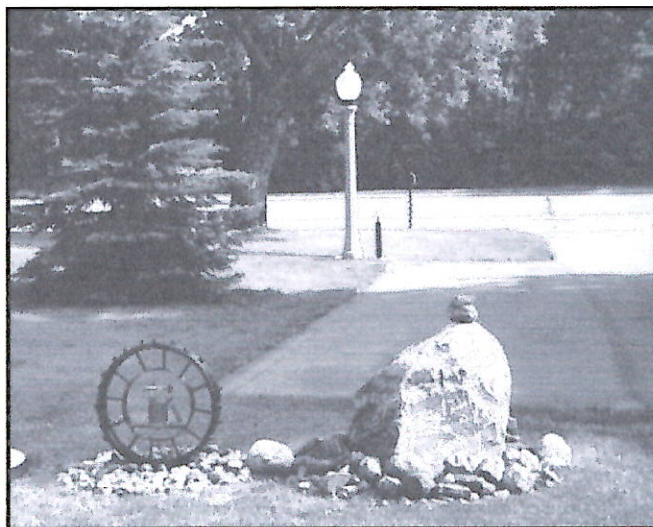
John Jaress, Fort Wayne, Indiana, is a 25-year collector with approximately 100 torches in his current collection. Early on, John had plans to collect old Stanley rules and planes, but being on a limited budget in college, he deferred any collections. He has always been attracted to polished brass, (like many of us!), and when he noticed polished blow torches at the swap meets and antique malls, he decided on a blow torch collection. John polishes many of his torches and prominently displays them in his home.

Josef Nudel, Haifa, Israel, is a relatively new collector of blow torches, and also collects portable tube radios, silverware, weighing devices, portable stoves, laboratory lanterns, and others not mentioned. Josef submitted an interesting letter that has been included in this newsletter as a separate article.

Frits Ordelman, S. Australia, Australia, is a 10-year collector with over 150 torches to date. With help from his daughter, his wife sponsored his membership into BTCA as a 70th birthday present. Happy Birthday Frits!

Don Steininger, Deerbrook, Wisconsin, started collecting torches 30 years ago when his father gave him his first blow torch. *"I remember it was in need of some Tender Loving Care. I took it home, disassembled it, and cleaned it by hand. It looked great, so I put it on my bar in the recreation room. Friends and family would also admire it, and some even gave me torches. The rest is history!"* Don has over 300 pieces in his collection, all displayed on shelves, and he's running out of room!

WELCOME ABOARD NEW MEMBERS!



The entrance to Mel Olson's property. Note blow torch welded into the wheel in the lower left.

NOTES FROM ALL OVER

Maurice Jernstedt recently hosted about 100 Future Farmers of America Kids and their teachers who visited Maurice's "Torch Museum" in his barn. The kids and teachers seemed very interested in the various torches and how they were used. Other museum items displayed also included a hand-cranked sheep-shearing rig, cream separators, and a few old tractors. Maurice enjoyed sharing with the kids and teachers, and suggested that it might interest other BTCA members to share their collections and information with similar vocational schools in their area.

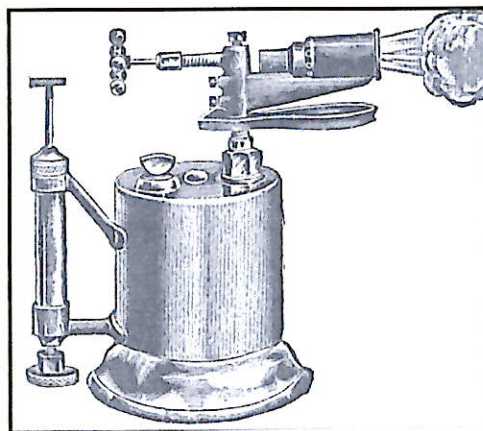
Mel Olson recently sent is some great photographs and included one of a KLEIN TOOL CO. blow torch. Klein was one of the few manufacturers that used copper in the production of their fuel tanks. Please advise if you have a copper Klein torch and we'll update the manufacturer listing. - ↓ -



KLEIN TOOL CO. BLOW TORCH
(Copper fuel tank)
Submitted by Mel Olson

Jerry Kelly sent in a *Ballou-Wright Automobile Supplies* catalog, dated 1906, that was reproduced in 1971 by the Oregon Historical Society. The Ballou-Wright Company established themselves as one of the first companies in Portland to cater to the "new fangled" automobile. It's a delightful 62 page catalog that lists a multitude of automobile supplies, including clothing (when automobiles were not enclosed), and every imaginable tool and accessory. They list two blow torches, one by name...a high-pressure brazier made by

the National Cement & Rubber Co., and a more traditional blow torch by an unknown manufacturer. -↓-



Blow torch listed in Ballou-Wright catalog
Unknown manufacturer, 1906 list price, \$4.00
Submitted by Jerry Kelly

Bob Sievert sent in an interesting article from the *San Diego Herald Tribune*, "MAN FACES CHARGE OF HAVING TORCHED HIS MOTHER'S HAIR." A 48-year-old San Diego man was arraigned on a charge of felony elder abuse after authorities said he got angry at his mother and set her hair on fire with a blowtorch. The article did not state what style of torch was used, but we assume it was a propane version. The perpetrator would have lost interest in his crime had he chosen a traditional gasoline torch...and had to wait the time it takes to fire one up!

Mel Olson sent in a photo of his QUICK MEAL blow torch, only one of four known to exist. Other members with Quick Meal torches are **Dennis Galaway**, **Mark Pedersen**, and **Chuck Tobin**, (please note that the enclosed Manufacturer Listing is not current with Quick Meal owners). Mel's torch appears to be an earlier model considering the pump-in-the-handle and the cast brass bottom assembly with the company name cast into the piece. - ↓ -



Quick Meal Torch
with copper fuel
tank

Submitted by
Mel Olson

Mal Mutimer recently acquired the lamp collection of Harry Goff. *"In the literature that came with the blow lamps was an old letter from Philippe Touillet. He was seeking two blow lamps, a WIRBUNBA and a ROEC, both made in Australia. Included in the literature was some printed data describing each of the blow lamps. I have never heard of either of these lamps, and after talking with other collectors, neither has anyone else. There is nothing on the photocopies to indicate where they came from. I know Philippe has passed on recently, but does any member know if anyone acquired his collection? I would be interested in finding more information on where the photocopies originated from, or any information on the two blow lamps."*

John Tingle recently acquired a WELLINGTON blow torch that, from the photo, appears to be in excellent condition...and most unusual considering the age of the tool. Wellington torches were manufactured in the late 1800's, and quickly disappeared from the market. There are only a handful of Wellington torches known to exist. - ↓ -



Wellington Blow Torch
Submitted by John Tingle

According to **Mike Jones**, *"about 20 years ago I made a lamp out of one of my duplicate blow torches. Over the years I've made a few more blow torch lamps for friends and family. One day while cruising ebay to find that elusive torch that none of the rest of you have seen, I saw a blow torch lamp for sale! I printed the picture. About a week later I saw another one. I printed that picture. One is an oddity. Two is a collection. You think collecting blow torches is weird? I'm setting on roughly 50 pictures of blow torch lamps. I need help!"*

Bob Mitchell submitted a copy of one of Norman Rockwell's famous paintings that was featured on the cover of the June 2, 1951 *Saturday Evening Post*. Other members have sent in the same copy of the **TWO PLUMBERS**, but this was the first copy that was small enough to be reproduced. - ↓ -



Chris Bayer submitted a copy of a KLEIN & SONS TOOL CO. #39 tool catalog. The 1943 Pocket Tool Guide was produced exclusively for linemen, electricians, and mechanics. Chris acquired the book after his grandfather passed away, and it was found in one of his filing cabinets. His grandfather was involved in the electrical trade for over 65 years and started as a delivery boy at the age of 13 for a local contractor. The data contained in the catalog provides insight into the history of KLEIN, and will be featured in a future newsletter.

Bob Mitchell, in addition to the Rockwell magazine cover, sent in operating instructions for **THE LENK Superheat**, No. 222 Gun Grip Alcohol Bltorch. (This is the pistol shaped torch that would certainly get you evicted from any airplane today should you try to bring one aboard.) The two-page instruction sheet includes a detailed description of the bltorch operating components and their function. Anyone wishing a copy can send a SASE to the Editor. Be sure to specifically request the LENK No. 222 operating instructions.

◆ ◆ ◆ ◆

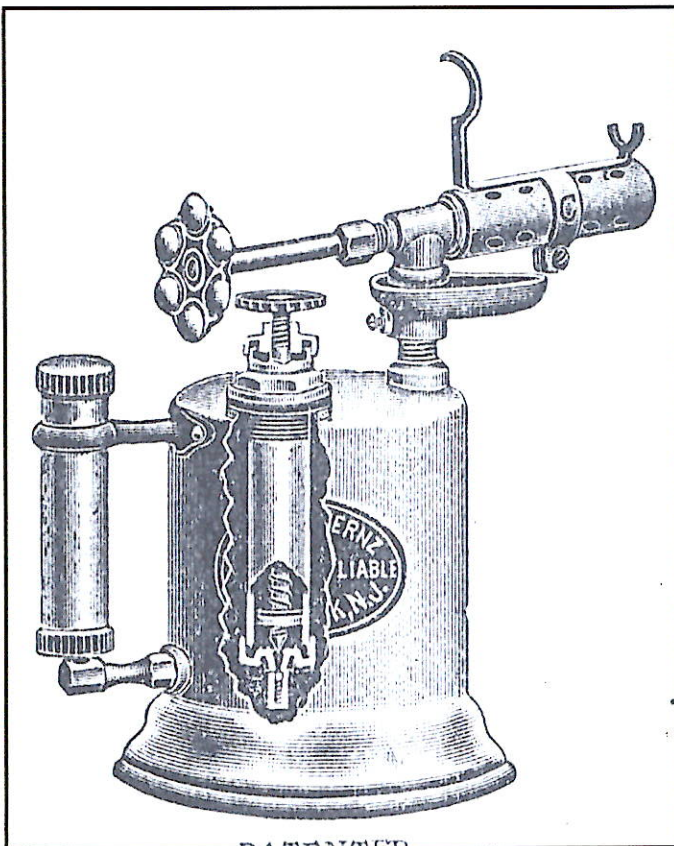
Otto Bernz Index & Catalog

Our Contributing Editor, **Graham Stubbs** has done it again and superbly produced an Otto Bernz Company blow torch listing and index. This is number three in a series of listings for the major US torch manufacturers, and according to Graham, this was the most difficult of the three since there was not much information available on the Bernz Company. Over the past few years more catalog information has come forward from members, and Graham was also successful in purchasing some rare, and unseen before, Bernz catalogs. Graham has continued with the same format that includes excerpts from the original catalogs, a numerical index, as well as source information.

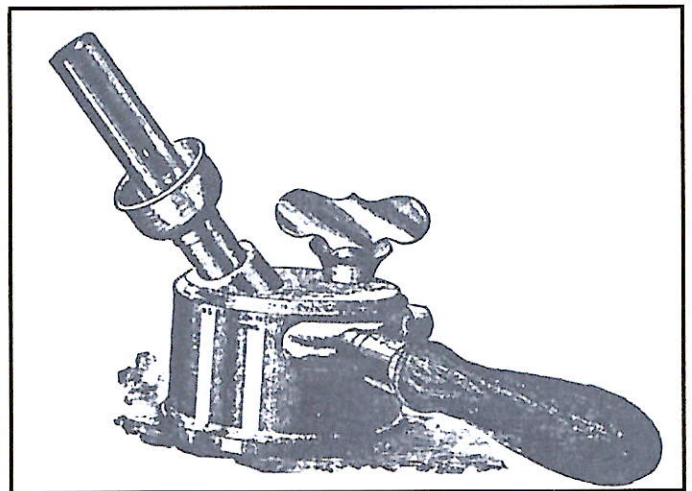
Of particular interest are many of the torches produced circa 1913, like numbers 19, 22, 27, and 71 just to reference a few of the 23 depicted. These are all torches that fall into the "transition period" in torch manufacturing when the air pump was moved from the handle location to the fuel tank location. - ↓ -

It appears that both configurations were produced simultaneously, and it is assumed that Bernz wanted to please all customers, but also wanted to take the torch design and manufacturing to the next level. You'll notice that on the referenced models, the handle assembly contains the same type of materials, except a hollow brass tube replaced the pump assembly. Some of the models were produced with a sealed tube, while others were sold with a threaded cap, and would include cleaning tools and spare pump leathers. It seemed like a unique and useful idea, however, it apparently was either too costly to continue or not popular with customers, and the feature disappeared in subsequent models.

One set of models was produced with the "transition" feature in 1936, numbers 77 – 80A, and included the cleaning tools in the handle holder, however, those models were the last to offer that feature. No other US manufacturer was known to utilize the "transition" feature, although all manufacturers transitioned from the pump in the handle to the air pump located in the fuel tank. The feature also appeared in some European torches, and it's uncertain where the concept originated.



Otto Bernz Co. No. 22 Blow torch, pint capacity
Air pump in fuel tank, with transition handle.



VULCAN Blow Torch
Circa 1907, list price \$4.00

One of the most mysterious torches listed in the Otto Bernz catalog, circa 1907, is the VULCAN torch. This is the only reference to the VULCAN torch, and it does not show up in any subsequent catalogs, nor are any spare parts listed in any Bernz catalogs. What's surprising is that during that circa 1907 period, Otto Bernz was stamping the company name on all torches, yet this one has no markings other than the two patent dates, April 19, 1892, and April 4, 1893. Neither patent references the Bernz Company or any other company. And during the circa 1907 period, the Bernz Company

was stamping "ALWAYS RELIABLE" on all of its products, yet the VULCAN is also missing that quality statement. It's possible that the torch was briefly produced and/or marketed by Bernz on behalf of another company or individual, but in any event...it continues to remain a mystery.

Also of interest are models 77-82. You'll notice that they were all produced to burn both gasoline and kerosene, (petrol and paraffin). The torches were sold with both burner blocks, and shipped with the gasoline burner block installed, and the kerosene block stored in a threaded location in the fuel tank stopper or plug. The only change required by the user to convert from one fuel to the other was to change the burner block...a simple process that only required a small wrench.

You'll note that Graham offers the document as Draft #1, and as more information becomes available from members, we will include the data and re-issue the document.

♦ ♦ ♦ ♦

A LEAGUE OF THEIR OWN

By Vera "Mavis" Feast

Expertise in their field
treasured collections producing yield
kleptomaniacs a true affliction
engrossed and absorbed
on their ebay addiction
observing what's bid
they patiently wait
determination hope
they've outbid with their stake
frustration obtaining time left remaining
self-denial on outlay expenses
satisfaction in winning pursuing relentless
forthcoming travel by air, land, or sea
discarding all wrapping
surveying with glee
scrutinizing intent inspection
contents sometimes face rejection
theme is one their conversation
amazing interest involving nations
intently loving handling with care
alert to discover items so rare
oblivious to those bemused with their clan
content with those who understand
despairing partners or spouses all lecture
they're in a league of their own
the blow torch collector.

♦ ♦ ♦ ♦

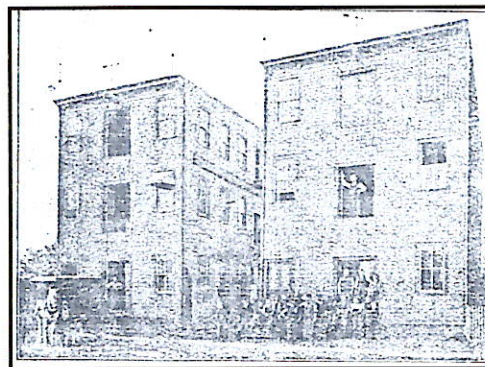
HISTORY OF THE OTTO BERNZ COMPANY



Of the three major US torch manufacturers, Clayton & Lambert, Turner Brass Works, and Otto Bernz, it is assumed from data collected that Bernz was in a strong third position, and followed closely behind the number two positioned Turner Brass Works. While all three began manufacturing within a short period of time, Turner Brass Works – 1871, Bernz – 1876, C&L – 1882, the Bernz Company provided one of the most complete line of plumbing products earlier than its two competitors. Comparing the "Big Three" manufacturers relative to blow torch related patents; Bernz was second as the following chart reflects:

US Manufacturer	Blow Torch patents issued	Patent Period covered
Clayton & Lambert	26	1889-1934
Otto Bernz	13	1903-1933
Turner Brass Works	11	1889-1932
Modern Metal Products	11	1934-1951
Volcano	8	1903-1932
Lenk	5	1919-1936
Pumpless Blow torch	5	1921-1923
Hauck	4	1917-1937
Wellington	4	1875-1898
P. Wall	4	1918-1954

Mr. Otto Bernz, a native of Newark, New Jersey, started his Newark company in the spring of 1876, and by 1894, the company had grown to occupy two large brick buildings on Ashland Street. The company employed twenty skilled machinists and factory workers, located in the two buildings that were connected by bridges. - ↓ -

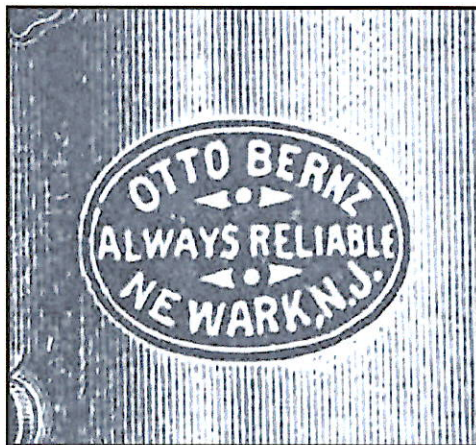


Otto Bernz Company
Circa 1894
Original two brick buildings
Ashland Street, Newark, New Jersey

History Cont.

Both buildings and the manufacturing machinery were powered by a 35 horsepower steam engine. A Newark history book, dated 1894, describes in detail the complete line of plumbing tools and mechanical specialties that were manufactured at the Newark facility. The Otto Bernz Company was well respected for the quality and variety of plumbing products offered, and was considered one of Newark's leading businesses that contributed to the City's progress and prosperity.

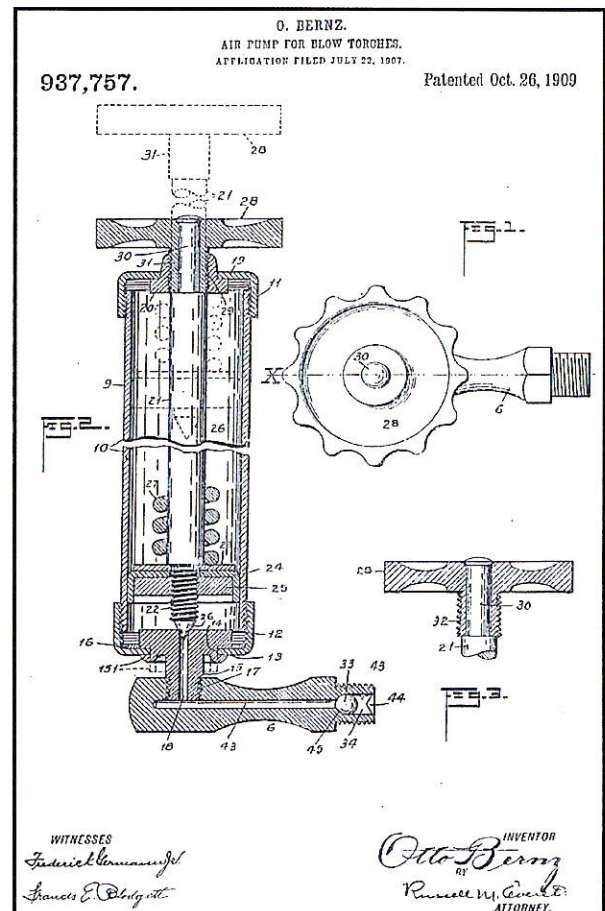
A later Bernz catalog, circa 1907, has a line drawing of the expanded Newark facility that shows the addition of 7 buildings plus many outbuildings, and an expanded product line. Otto Bernz added a number of items to his catalog of plumbing supplies and tools and included products manufactured by other companies. The trademark "**ALWAYS RELIABLE**" began to appear in advertisements and on tools, and was the quality statement for the company into the 1950's. The company also developed and patented a burner assembly in 1910 that included an intricate design for fuel and airflow, and was nicknamed "**THE SNAIL**". The new burner design allowed Bernz to boast "**our furnaces and torches use less gasoline than any others on the market**".



O. Bernz "ALWAYS RELIABLE" Label
Circa 1907

Available information on the Otto Bernz Company from 1894 to 1940 is somewhat limited, and while the company continued to prosper and grow during that period, little is known of their story. Two known significant incidents did occur during that growth period that are worth mentioning, and both relate to patents issued to the Bernz Company. The first and most significant was the screw-down air pump plunger. The patent date, 10-26-1909, was prominently displayed on all Bernz torches, and reflected a unique feature among all torch manufactures during that period. For the first

time, pump plungers were protected from the rigors of usage and were prevented from being bent or damaged while in the stored position. Clayton & Lambert developed a "T" pump plunger, and Huffman produced a screw-cap configuration, but none compared to the Bernz design. Another feature designed into the 1909 patent provided for a no-leak seal, and Bernz also advertised their torches with the "**NEVER LEAK**" pump.

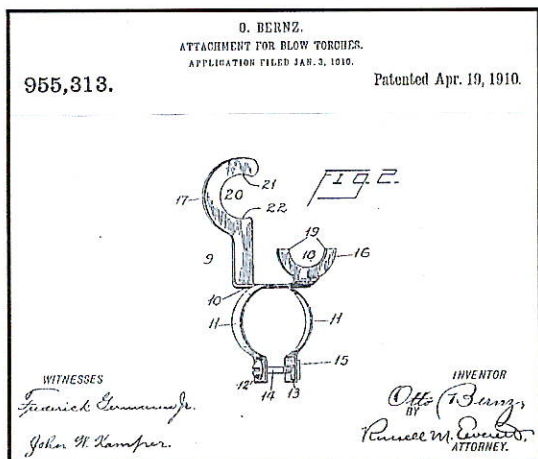


"NEVER LEAK" Pump Design
Patent # 937, 757
Otto Bernz, Inventor

The second significant patent was a design for a simple, yet effective, adjustable soldering iron holder. Patent number 955,313, dated 4-19-1910, described a device made from stamped heavy gauge sheet steel and formed to create an iron holder that could be adapted to just about any burner assembly. It was during a period when soldering iron hooks were integrally cast into the burner assembly, and were frequently broken off. Once broken, the cast hooks could not be replaced unless the user replaced the entire burner tube or assembly...a costly replacement in the early 1900's. With Otto Bernz's invention, not only could the adjustable iron holder adapt to any burner with a broken cast hook, but

History Cont.

could be easily added or removed from any burner assembly to facilitate a unique repair or manufacturing situation. - ↓ -



Attachment for Blow Torches
Soldering Iron Hook
Otto Bernz, Inventor

Late in 1940 the Bernz Company relocated to Rochester, New York and accomplished a name change to BernzOmatic. Little is known about the relocation or the name change, however while the relocation was not permanent, the name change continued on with the company to the present.

In the 1950's, the company grew their manufacturing line to include Propane torches (the death of gasoline fueled blow torches), outdoor appliances for camping that included cook stoves, lanterns, portable heaters and insecticide foggers, to name a few. BernzOmatic Limited (now part of Newell Industries Canada Inc.) was launched in Canada.



During the 1960's and early 1970's, BernzOmatic continued expanding their product line and added fire extinguishers, smoke detectors, charcoal grills, hand tools, refrigerators, and many others. The

company purchased the former Birds-Eye manufacturing plant in Medina, New York, and during the period of 1976 to 1979 relocated all manufacturing and administration operations to the new location.

In 1982 BernzOmatic became a wholly owned division of the Newell Company and continues to this day to manufacture a full line of propane torches and accessories at the BernzOmatic Drive facility in Medina, NY.

Finally, in 1988, BernzOmatic purchased the rights to the Turner Brass Works Co., and now manufacture and distribute a line of propane torches and accessories under the name of TURNER.

Web surfers can visit the BernzOmatic Website at www.bernzomatic.com to view their complete line of BernzOmatic and TURNER products.



HAPPY ANNIVERSARY

The following members are celebrating their 5th anniversary as members of BTCA. Congratulations on your first 5 years and your continued support to BTCA!

Dick Bernard
Bob Calhoun
Don DeMay
Arnie DeYoung
Gary Fye
Jerry Godin
Walter Gretkowski
Ron Johnson Jr.
Mike Jones
Ralph Larson
Bill Link
Charles Monthy
Suezy Proctor



4th ANNUAL BTCA CONVENTION

In spite of the tragic events of September 11th, the BTCA 4th Annual event proceeded as planned on September 15th in Brooks, Oregon. **Mark & Arlene Pedersen**, and assisted by **Maurice & Noma Jernstedt**, selected the facility and arranged for the entire event. Festivities were conducted at the Antique Powerland Museum in Brooks and attended by 32 members and spouses.

with the attendees. For some members, it was their first "encounter" to such an event, but for many of the members, it was business as usual.

Our hosts provided for a buffet lunch, and since the weather cooperated, we all dined outdoors. Following lunch, there was a short meeting; gifts were awarded to the hosts, and group photos taken. Everyone returned to the display area for more trading, admiring, and torch story telling. Most everyone was packed up and on the road by late afternoon.

As in past torch gatherings, new and unique items are displayed, much to our amazement since one would think that by now every torch manufacturer would be known!

Maurice Jernstedt displayed a "STAYSALITE" soldering torch that was manufactured by the KLEIN TOOL COMPANY. Electric linesmen exclusively used this unique torch, as it was configured to join two electrical power lines together while suspended from electric poles.

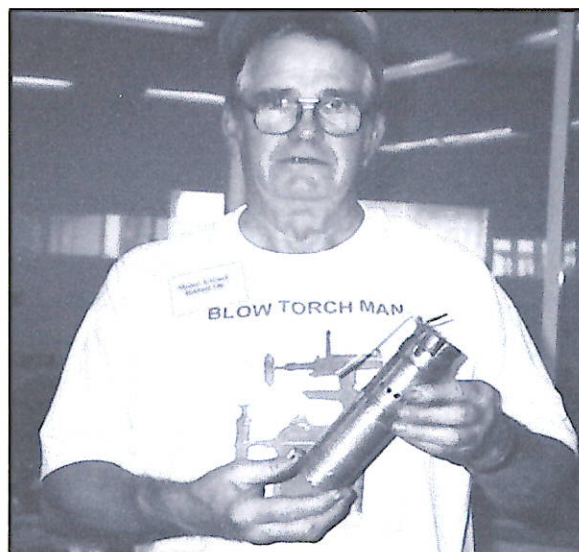
The device, patented on August 9, 1910, was registered as a Wire Joint Soldering Torch, and was constructed so that the linesman could wrap the two lines together, slide the joined lines into the torch, lock the lines in place, then fire up the torch to complete the solder joint. The device was virtually windproof, and required no preheating with a drip cup. Other earlier devices had to be preheated on the ground, and then carried up the pole or ladder while lighted, and posed a safety problem. - ↓ -



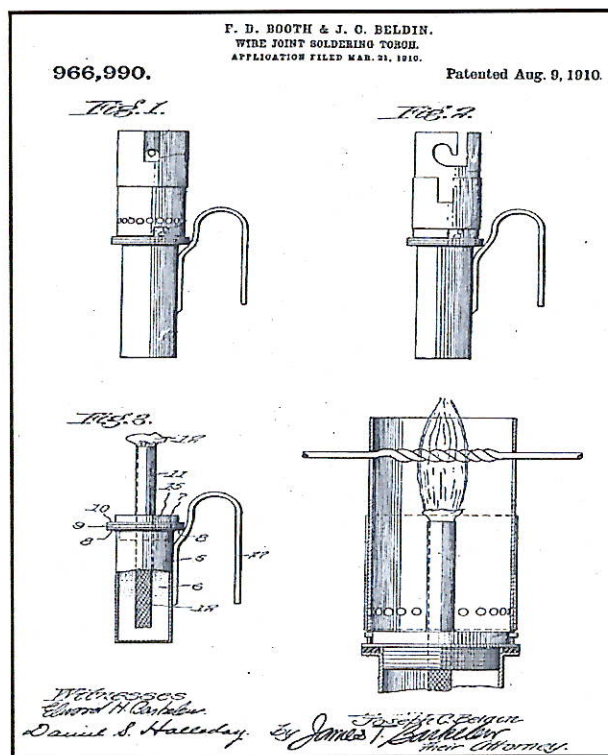
From left to right, **Noma & Maurice Jernstedt**,
Ron Carr, **Mark & Arlene Pedersen**

Diehard torch collector, **Larry Fields & Patricia Hauser**, braved the perils of numerous airports, security checks, and luggage searches to make their way to the Brooks event from North Carolina. (And to prove that Larry is a diehard torch collector, he and Pat have not missed any of the four West Coast events.) Other long distance travelers included **Les & Gina Adams** from England. Fortunately, Les & Gina were already in the US by September 11th, so they were spared the difficulties experienced by Larry and Pat. Long distance drivers included **Lee and Terry Miller** from Montana, and **Bob & Marge Spear** from Idaho, and the remaining attendees traveled in from parts of Oregon and Washington State.

Because of the location, many attendees stayed at local motels Friday evening, and by 9AM on Saturday, most of the attendees had arrived and set up displays inside the museum facility. There were a total of 16 blow torch displays with well over 500 torches of all types and descriptions represented. The morning was spent walking around and admiring some of the unique torches, and renewing and making new acquaintances



Maurice Jernstedt displays a
KLEIN TOOL COMPANY
"STAYSALITE" LINESMEN TORCH



Klein Tool Co. "STAYSALITE" Linesmen Torch
Patented August 9, 1910

device was designed and produced for the military, since a similar torch, owned by **Dick Sarpolus**, has military markings on the fuel cartridges.

Charles Monthy had an unusual Clayton & Lambert blow torch in his display. It is a relatively new C&L torch (circa 1952), and what makes it unusual is the center feed fuel tube.

You'll notice that this feature, the fuel tube exiting the fuel tank from the center position, was a construction style commonly used during the turn of the 20th century and into the early 1900's. By the 1920's and 1930's most all torch manufacturers converted to fuel tubes exiting the fuel tank from the edge. However, for some reason, C&L manufactured one torch in the early 1950's, model # 327 (see Graham Stubbs' C&L index). There is no mention of why they revived this feature, or its intended purpose, but the #327 is the only known "new" torch with the center fuel feed feature. - ↓ -



Clayton & Lambert Model # 327
With Center Fuel Feed
Displayed by Charles Monthy

Maurice Jernstedt also displayed a never-seen-before SHALER MANUFACTURING CO. alcohol torch. The SHALER torch is made from brass, and is approximately 2 inches tall and 1 ½ inches in diameter. There was no additional information available about the company or the torch, so if any member has any information, please contact the Editor or Maurice so we can include the data in the Manufacturer's Listing.

John Dorffeld's display included a few unusual items, including a BARTHEL BLOW LAMP COMPANY, Boston, MA blow torch, with a model name "Neuachat". The torch could have been an import and sold in the US market to compete with the domestic manufacturers, or the torch could have been manufactured or assembled in Boston. Since it carries a Boston location, we have added this manufacturer to our growing list.

John also displayed a Cartridge Soldering Iron manufactured by the KEMODE MFG. CO., Syosset, New York. The device has a Bakelite handle and included many attachments. To fire up the torch, a fuel cartridge is inserted into the receptacle, the handle is screwed back onto the cartridge, and then the firing pin is pulled back to its limit and released. The firing pin strikes the back of the fuel cartridge and sets off a chemical reaction inside, creating sufficient heat to accomplish simple soldering tasks. It's assumed that the

Lee Miller displayed a unique "kettle" torch with OTTO BERNZ and UNIQUE markings. The torch does not show up in Graham Stubbs' Bernz index, however, close examination reveals features indicative of an original fuel tank and air pump assembly. It's possible that someone replaced the Otto Bernz burner assembly

Convention Cont.

with the Unique burner, or put an Otto Bernz air pump into a Unique blow torch. Perhaps another member can identify this torch or verify its origin.



Lee Miller displays a
Bernz/Unique Blow Torch

Larry Fields displayed a large assortment of reproduction decals that were provided by **Bill Bennett** from North Carolina.

Bill located a local shop in Fayetteville, NC that specializes in reproducing decals, and the company produced the assortment as shown in the photo. Details are being discussed with the company, and we'll advise in the next newsletter on how to obtain the decals. -↓-



An Assortment of Reproduction Decals

Mark Pedersen boasted a never-seen-before blow torch, a **GEER VAPOR BURNER & CLEANER**, manufactured by the **Straub Manufacturing Company**, Oakland, California. The torch was manufactured with a steel fuel tank, capacity approximately 1 gallon +, and a cast iron or steel burner assembly. It is assumed that, by the large burner assembly, the torch would produce a fairly large and hot flame. The handle is wood with a brass valve assembly and fuel stopper.

The **GEER VAPOR BURNER** was manufactured under patent number 1,236,699 and dated August 14, 1917. The patent, invented by Paul Geer, was issued as a Self-Generating Heating-Torch and featured an easy cleaning feature to remove carbon buildup. The unique burner design and shape provided a high quality flame where the air and generated gas mingled together in the combustion chamber. The patent model burned fuel oil, and both the patent model and Mark's torch have a connection for external air.

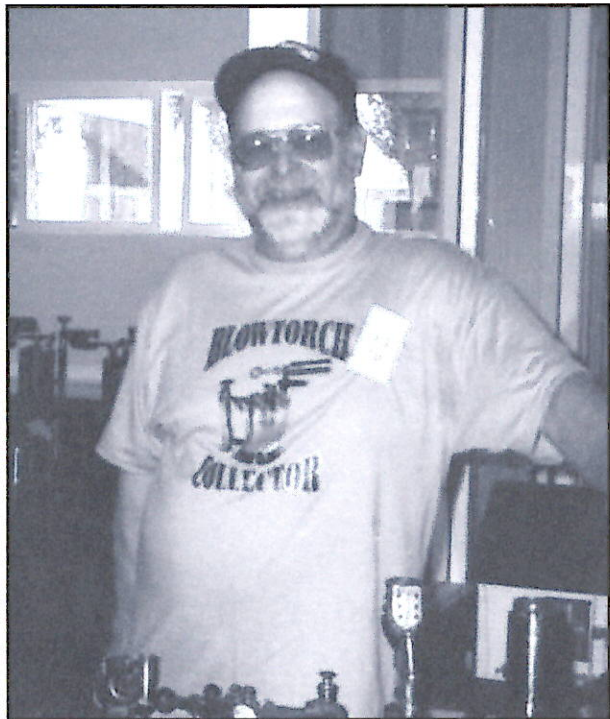
The patent also featured a removable drip cup that was attached to the underside of the burner assembly with a hook. As in many cases, the actual manufactured torch does not resemble the patent, and in this instance, Mark's torch does not have the removable drip cup.

Since the **Straub Mfg. Co.** is a new manufacturer, the company will be added to the manufacturer listing, and will show up in the next distribution.



Straub Mfg. Co. **GEER VAPOR BURNER & CLEANER**
Patented August 14, 1917
Displayed by Mark Pedersen

Jon & Judy Suta had a few blue/gray tee shirts that were for sale at the convention. They are of high quality cotton, and the design was created by Jon & Judy. Contact Jon or Judy if interested in purchasing a Suta original design tee shirt.



Jon Suta and his BLOWTORCH tee shirt

ATTENDEES

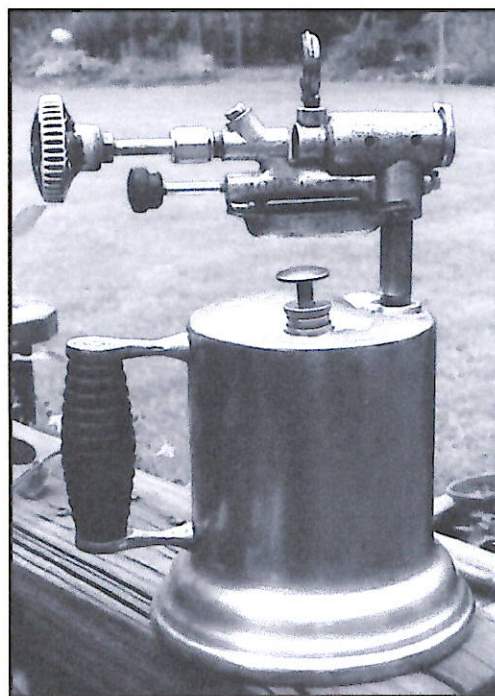
Les & Gina Adams
Al & Elaine Austin
Ron Bunting & Beau Sinkler
Ron & Janet Carr
John & Dolores Dorffeld
Larry Fields & Patricia Hauser
Richard & Judy Gjersee
Mark & Shirley Hahn
Maurice & Noma Jernstedt
Paul & Marge Johnson
Jerry Kelly
Lee & Terry Miller
Charles & Shirley Monthy
Mark & Arlene Pedersen
Bob & Marge Spear
Jon & Judy Suta
Vicky Teeters & Daughter



NO WAY PREWAY...REVISITED

Glenn Burch sent in information and a photo to add information to the Preway article featured in *THE TORCH*, issue #20. Glenn has a PREWAY torch, model #45A, and not only does he have a model not listed in the article, but his Preway torch has a bottom fuel fill.

All information originally indicated that all Preway torches were top fill, and that the fuel was added after the air pump was removed from the top of the fuel tank. It is unknown if other Preway torches also featured the bottom fill, or if there are other Preway models yet uncovered.



Preway Blow Torch, Model #45A
Submitted by Glenn Burch



NEWS FROM ISRAEL

By Josef Nudel

I noticed that most of the torches listed in the BTCA newsletters are (naturally) of North American manufacture. Most of my torches are European; Primus, Optimus, Hahnel, Express, and more. Probably because of the location...it was easier and cheaper to

import blow torches into Israel from Europe, rather than from the USA, and there was an extremely large mass of such imports to the Middle East, as a whole. Not to forget, that until the establishment of the State of Israel in 1948, we were under British control, and the borders were open to all trade. So, as a result I have a Primus blowtorch sold in the Syrian market with the name of the Syrian dealer imprinted in Arabic. I have the same situation with a different item from Egypt.

Gas was not in common use until the late 1960's, so in almost every home there was a portable pump stove for cooking and laundry. These days you can find small traditional restaurants that serve dishes that require long, slow cooking over a low-heat fire, so they use this type of old stove, and some of them do not have a pressure pump. The term "Primus" has become generic to them as a result.

Blowtorches were in use with every trade that had use for a focused flame, such as plumbers, machinists, jewelers, house painters, technicians, etc. Today, blowtorches are not typically collected in Israel, but are found in the thousands since they were very common and in use up to the 1970's.

◆ ◆ ◆ ◆

➔ OFFICIAL BTCA TEE SHIRTS ➔

Dick Sarpolus has contacted a shirt company that provides good quality tee shirts and can also produce a color screen printing of the BTCA logo for a reasonable price, \$12 each plus a nominal postage fee (higher outside the US). These are good quality, 100% cotton tee shirts, in sizes S, M, L, XL, and XXL.

Two questions to our membership...how large would you like the BTCA color logo to be, its location, and would you be willing to purchase one or more shirts? Some suggestions already offered on the logo size and location include:

- A large logo on the back
- A large logo on the front
- A small logo, 2-3 inches wide, located just above where a pocket would be located.

Because of design, layout, and setup fees, there needs to be an initial minimum order of 24 shirts, of any size combinations. There after, each order needs to be a minimum of 12 shirts...again with any size combination. Many of you have expressed an interest in such a tee shirt; so let's hear from you on:

- Your level of interest
- Comments on the logo size/location.

You can send comments to BTCA Editor, 3328 258th Avenue SE, Sammamish, WA 98075, phone 425-557-0634, or email to roncarr@prodigy.net.



BTCA Logo for Official BTCA Tee Shirt

◆ ◆ ◆ ◆

THE TORCH

Official publication of the Blow Torch Collectors Association is published three times per year.

Editor
Contributing Editor

Ronald M. Carr
Graham Stubbs

THE PURPOSE of BTCA is to preserve the history of blow torches and related equipment, to encourage the identification, classification, and exhibiting of such equipment, also to promote the study and better understanding of operation, purpose, and application.

Membership in BTCA is open to any person sharing its interests and purposes. For membership information, write to: Ron Carr, 3328 258th Avenue SE, Sammamish, WA 98075-9173, email to: roncarr@prodigy.net, or by phone: (425) 557-0634.

THE TORCH welcomes contributions from anyone interested in our purpose. Articles can be submitted in any format and should include supportive literature whenever possible. All submittals should be sent to Ron Carr at the above address.

No part of THE TORCH may be copied or reproduced without the written consent of BTCA.

CLASSIFIED ADS

Wanted: **Josef Nudel** is very interested in trading European torches for US manufactured torches. Other items in his variety of collections are available. You can contact Josef at 7 Golda Street, Haifa, Israel 34982.

For Sale or Trade: One hundred torches available for sale, or trade for Washington State license plates, 30 years or older. Contact Richard Woodruff, 430 E. Gowe Street, Kent, Washington 98031-6185, or phone 253-859-2622.

Trades Wanted: Scottish collector has a few doubles, unpolished, and would like to trade for US torches. There is a Primus 632, Sievert 555, Optimus 411, and a RM 2034 just to mention a few. Contact **Michael Hanson**, School House, Sinclairston, Cumnock, Ayshire, KA18 2RT, SCOTLAND, or phone 01292 590609, or email to mmjjhh@compuserve.com.

For Sale: A quart size C&L torch, circa 1910 with original small wood valve handle. A Turner Brass Works quart size brass torch, in very good condition except the soldering iron hook is broken. Contact Dale Meek at 419 Scarlet Maple Drive, Sugar Land, Texas 77479.

Wanted: I am an avid collector of rare engines manufactured by the Mietz & Weiss Co. of New York, and I would like to purchase a Hauck kerosene vertical burner torch. The Hauck vertical burner torch was used to pre-heat the M&W engines, and I would like to find an original Hauck torch to complete my collection. Please contact Dusty Erickson, at 7950 E. Redfield, Suite 160, Scottsdale, Arizona 85260, or phone 480-948-1644, or email to dusty@gameguns.com.

Trades Wanted: The Vice President of the French Blow Lamp collectors group is interested in trading for US manufactured torches. Interested individuals should contact Strasser Jean-Jacques, 7, rue de la chaine, 67160 Wissembourg, FRANCE, or email to kessel@wanadoo.fr.

Wanted: **Charlie Smith** would like to purchase Hercules, Fulton, Merit, Dunlap, or Craftsman torches. They must have readable decals in good condition. Please send or email photographs and asking price to Dr. Charles C. Smith, Geological Survey of Alabama, 420 Hackberry Lane, PO Box 869999, Tuscaloosa, Alabama 35485, or phone 205-349-2852, or email to ccsmith@gsa.state.al.us.

For Sale: Fourteen blow torches, manufactured by O. Bernz, Clayton & Lambert, Turner, Huffman, and some unknown. Mostly quart size, a few pint size, all brass, most have an original soldering iron hook, in very good condition and all have been refinished. Will sell individually or as one lot. Contact Gerry Halpern, 485 Clearmeadow Drive, E. Meadow, New York 11554, phone 516-731-0645, or email to thalpern@juno.com.

For Sale: Otto Bernz blow torch, one gallon size, marked as model #502. Dimensions are 11 inches high and 7 inches in diameter. Decal in very good condition and includes windscreen on burner assembly. Seller is Beatrice Nichols at 1246 Arrowhead Beach Road, Dresden, New York 14441-9701, or phone 315-536-6050.

For Sale: A quart size Clayton & Lambert brass blow torch, pump in fuel tank, wood handle, steel spoke valve handle, and patent date of 1921. Soldering iron hook is broken. Make best offer to Marlene Watland, 3781 Bear Drive, Lake Havasu City, Arizona 86406, or phone 520-854-1262.

Trades Wanted: **John Tingle** is interested in trading for US manufactured blow torches. He has an abundance of blow lamps and can provide many different models from numerous countries. John is located at Prospect House, 47 Wrington Road, Congresbury, North Somerset, England BS49 5AS, or call 01934 832267, or email to emily@alice13.fsnet.co.uk.

For Sale: A must item for all torch collectors! One of our members, **Mark Pedersen**, is selling replacement wooden handles with a brass collar for the older Turner, O. Bernz, and Clayton & Lambert torches. It is the small wooden handle with a small brass collar that slips onto the steel shaft for the fuel control valve. A majority of the original wooden handles are usually broken or missing which detracts from the beauty and value of the torch. You'll need to specify either a 1/4 or 3/16th-hole size, and either black or natural finish. Price is \$2.50 each plus postage. Contact Mark Pedersen, 6112 SW High, Mill City, Oregon 97360, or call 503-897-3101.

The CLASSIFIED ADS is a supplement to *THE TORCH*, and is available for advertising to all members of the Blow Torch Collectors Association in good standing, at no charge. Advertising for all non-BTCA members is available on request. Contact Ron Carr, 3328 258th Ave. SE, Sammamish, WA 98075, (425) 557-0634, or email at: roncarr@prodigy.net

4TH Annual BTCA Convention



4TH Annual BTCA Convention



L-R, Noma & Maurice Jernstedt, Ron Carr, Mark & Arlene Pedersen



Noma Jernstedt & Judy Suta



BTCA Members



VICKY TEETERS
SALEM, OR



CHARLES MONTY
PITTSBURGH, PA



BOB SPEAR



Al Austin



MARK HAHN
CLALLA, WA