

THE TORCH

NEWSLETTER OF THE BLOW TORCH COLLECTORS ASSOCIATION

- Issue #14 -

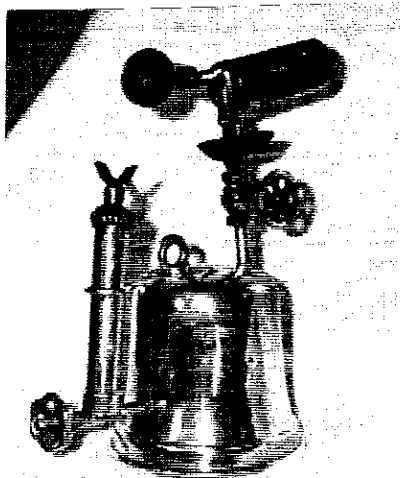
- June 1999 -

EDITOR: RON CARR 3328 258TH AVE. SE, ISSAQUAH, WA 98029-9173, PHONE (425) 557-0634, email: roncarr@prodigy.net

- No part of THE TORCH may be reproduced in whole or part without the written consent of the editor -

Summer has arrived, at least in most areas of the U.S., and that means flea markets, auctions, garage sales, and numerous other outlets to search for the elusive blow torch. Happy hunting!

♦ ♦ ♦ ♦



BOSTON
GLOBE
GAS LIGHT CO.

Submitted by
Dick Bernard

- NEW MEMBERS -

Don Bishop, Huntsville, Alabama, is a relatively new collector of 3 years with a modest collection.

David DeBruine is a new member from Wyoming, Michigan.

John Dorffeld, of Olympia, Washington has accumulated a torch collection of 150+ pieces over the past 10 years, and frequently displays them locally at tractor rallies.

Bob Estell, Milton, Washington, is a new member that was sponsored by his friend "Low Profit" Al Austin, a current member also from Washington.

Bob & Al appear to have much in common, including the same make & year car and the same year & color Dodge truck. Both have 5th wheel trailers, same hobbies, both retired from the Navy, and both "fight" for the best torch deals during their travels.

Clarence Goldberg is a new member from Annapolis, Maryland.

Billy Hart, Ft. Myers, FL, joined our collecting group after visiting our blow torch webpage.

John Hoffman, Emerald Hills, California is a six year collector with a growing torch collection. Many are polished and displayed...with (gasp) two converted to lamps. John also collects fire extinguishers and fire hose nozzles.

Richard Lenke, Mogadore, Ohio, has been collecting for 4 years, and started with his Dad giving him the first torch. Richard has over 170 torches with many polished and displayed.

Leo Neal, Lawton, OK, with a modest 30 torch collection. Leo & his son, Daran, own and operate Circle N Polishing in Lawton, specializing in stainless steel. I'm sure that Leo has also polished a few of his torches to perfection.

Lloyd Rusco from Muskegon, MI, is a 4-year collector with approximately 30 torches, and a growing collection.

Peter Trofimchik, Wallingford, Connecticut, starting torch collecting in 1976, then completely sold his collection, but is back again....collecting torches. He enjoys refinishing and selling torches, and many of our members have purchased torches from Pete on ebay, including yours truly. I also asked Pete if he collected anything other than torches. His response was that he also collected Norton motorcycles and school detention slips from his son....he's 13!

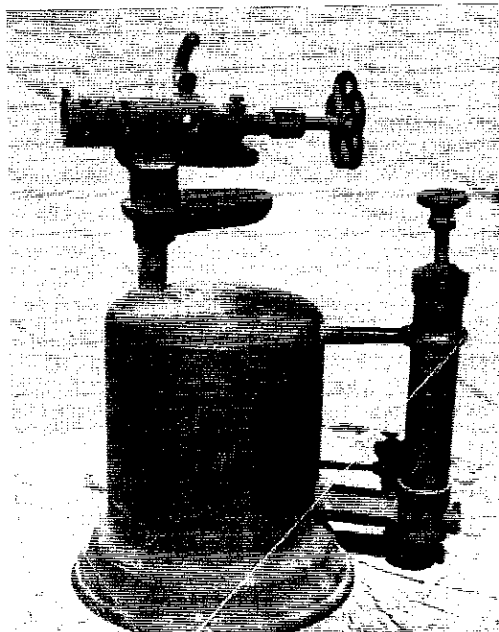
Vicky Wood-Teeters, Salem, OR, is a five-year collector with a growing collection that includes many that have been hand polished. Vicky's Dad gave her some sound advice, "**torch prices are going up....hang on to them, and buy MORE!**" Vicky

also collects cigarette lighters....more things that get hot!

Don Worrell, Olympia, Washington, a 10-year veteran who started collecting blow torches because his wife said he needed to collect something. Don has over 100 pieces with a few polished and displayed around the house.

WELCOME ABOARD NEW MEMBERS!

◆ ◆ ◆ ◆



Geo. W. Diener Co. ?
Chicago, IL
Submitted by Graham Stubbs

It is interesting to note that the trend continues.. a large percentage of our torch collectors are from the State of Washington. Last count on the score was Washington-23, the rest of our active BTCA organization-115. That's 20% of all our members from the Emerald State, soon to be re-named the Wet State (or the Blow Torch State). Im beginning to think that the Washington weather must have something to do with this phenomenon!

◆ ◆ ◆ ◆

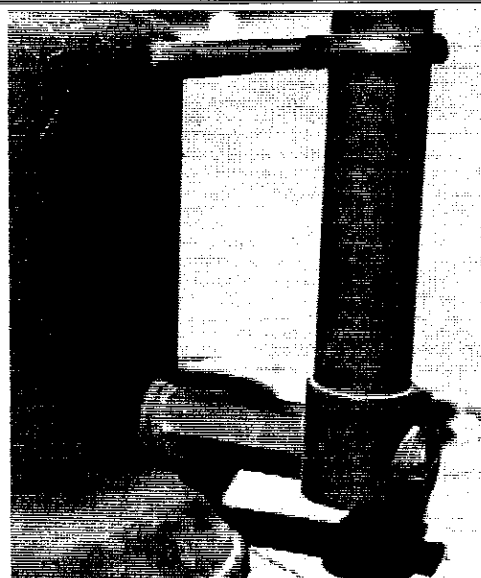
NOTES FROM ALL OVER

One of our newest members, **John Hoffman**, reported that when his last dog passed away he had

the dog cremated, then put the ashes inside a modified quart size blow torch, and it now sits on his mantle. His dog, Rodney, was a large 85 lb. Basset Hound, and was with John when he purchased his first blow torch. That's what you call friends to the end....and beyond. John is in the funeral business, and has seen various unusual people urns over the years, and it appears that he has created a unique urn for Rodney!

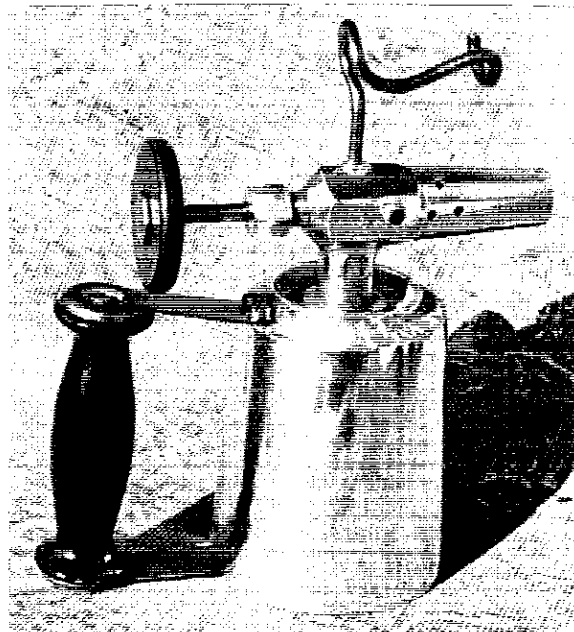
Graham Stubbs sent in a flyer (see enclosed) from the **BEST STREET LIGHT CO.** that includes some of their products including a blow pipe, or what we would identify as a blow torch. Graham displayed the same type blow pipe at last years blow torch convention in Mt. Vernon. It's also interesting to note the featured vapor gas street lamps, out-door torches, and portable spray wall lamps, all state-of-the-art illumination devices for the late 1800's.

Graham included numerous torch photos, one worth noting is what I believe to be a very early version of a Geo. W. Diener Mfg. Co., Chicago, IL (see inset). The telltale sign is the 5-rounded lobe valve handle, indicative of Diener torch. Torches manufactured by the Huffman Mfg. Co., Dayton, OH, are also very similar, except that Huffman torches have a 6-rounded lobe valve handle, a minor difference....but significant in identification. Also note the unusual lower handle support, a five-sided heavy-duty brass connector (see inset). Are there any collectors with a similar early Diener torch that can verify this assumption?



Geo. W. Diener Co. ?
Chicago, IL
Handle detail
Submitted by Graham Stubbs

Between **Tom Bartlett** and **Mel Olson**, the PHOENIX torch mystery has been solved. It seems that the **DECKER MFG. CO.** manufactured a line of torches called PHOENIX, and unless you had the original Bakelite valve handle that displayed the Decker name, you would have a difficult time determining the manufacturer. Tom has a PHOENIX #3 with a replacement handle, and Mel has a PHOENIX #2, very similar to Tom's, except with the original Bakelite valve knob. The torch has a cast aluminum fuel tank with drip cup cast into the top of the tank (see inset).



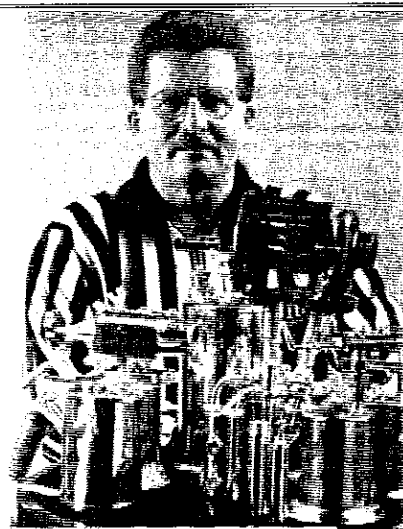
PHOENIX #2

Manufactured by Decker Mfg. Co., Newark, NJ
submitted by Mel Olson

I received an email note from **Don Bishop** regarding a recently purchased **Turner/Clayton & Lambert** torch. It turns out that a previous owner substituted parts from Turner and C&L torches to make a "good one". Just a reminder that when torch shopping, be cautious of the markings on the prospective torch....and refer to the manufacturers list for guidance on most torch manufacturers.

Larry Fields was recently featured in a monthly magazine, *REFEREE*; a publication devoted to referees of all sports. Larry has officiated ice hockey matches, from youth leagues all the way up to the old Atlantic Coast Hockey League, and started collecting blow torches after his collection of oscillating fans became too unwieldy. Larry stores his torches in a small building away from his home. "I used to store them in my basement," he says. "But

my wife told me she wasn't living on a gasoline time bomb, so I moved them."



The ref and his torches

Dick Bernard sent in a large number of torch photos of US manufactured torches, with a few European torches included. Of particular interest were two new, never-used Lenk alcohol torches that he purchased from a guy who was cleaning out his barn. They were labeled Christmas 1952 & 1955. I guess the recipient didn't think much of the two Christmas presents! Also included in the photo package was an **Otto Bernz #87** torch. While the torch is marked O. Bernz and #87, the fuel tank looks a bit suspicious, and I suspect that O. Bernz parts may have been substituted onto another manufacturer's fuel tank (see inset). Can anyone substantiate this O. Bernz #87 configuration? See page 8 for a known version of an O. Bernz #87.



O. Bernz Mfg. Co.
Newark, NJ

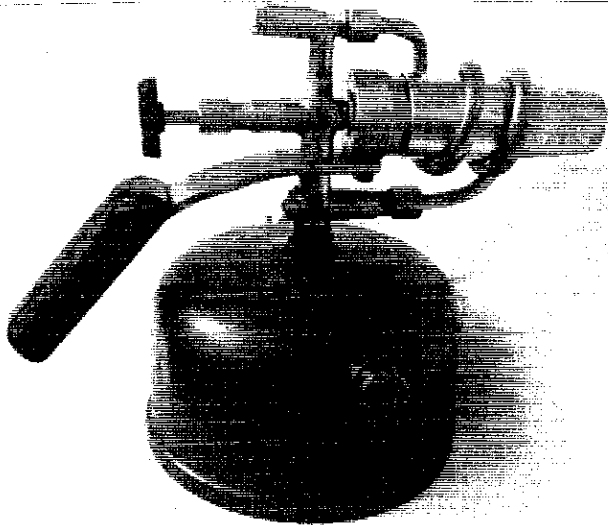
Model #87 ?

Submitted by
Dick Bernard

Mel Olson sent in nameplate rubbings for three different versions of the WHITE MFG. Co.'s HOT BLAST torch that was purchased by the Turner Brass Works in 1904. Two of the torch nameplate rubbings can be seen in THE TORCH, issues 4th Qtr. '97 & 1st Qtr. '98. The third nameplate in the series, is the original WHITE MFG. CO. HOT BLAST nameplate before 1904 sale to Turner. You may check your collections to see if you also possess one of each.

Stefan Berg sent in copies of Sievert & Optimus torch catalogs that contain significant information that I will utilize in future newsletters. In particular is an article that discusses principals of operation, performance, and temperature. **Many thanks for all of your submissions!**

♦ ♦ ♦ ♦

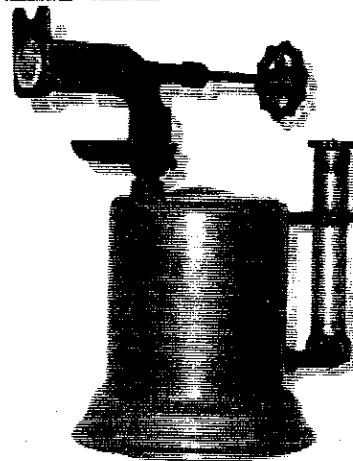


COLEMAN LAMP & STOVE CO.
Wichita, Kansas
Submitted by Michel Duval

**NEW
MANUFACTURER ADDITIONS**

We seem to discover more and more new torch manufacturers each year, and this year is starting out with a blast. **Michel Duval** sent in a photo of a torch made by the COLEMAN LAMP and STOVE Co., Wichita, KS. The torch reflects a European design with a fuel tube wrapped around the nozzle to provide fuel vaporization. The fuel tank

resembles a Coleman lantern fuel tank with an identical air pump (see inset).



American Mfg. Co.

Location unknown
Submitted by Dave Schulte

Frank Eskra sent in an email photo of a WESTINGHOUSE ELECTRIC & MFG. Co. torch. The torch is a pint size, pump in the handle, and the fuel tube exits from the top center of the fuel tank. While the fuel tank stamping reflects Westinghouse with a style number 174369, including a Circle W cast into the pump plunger top, the torch looks suspiciously like a Ridgely Trimmer Co.-Springfield, OH torch. Based on information, I have to assume that Ridgely Trimmer manufactured the torch line for Westinghouse as a brand label, and will list it accordingly. Does anyone else own a Westinghouse torch to compare notes or verify the manufacturer?

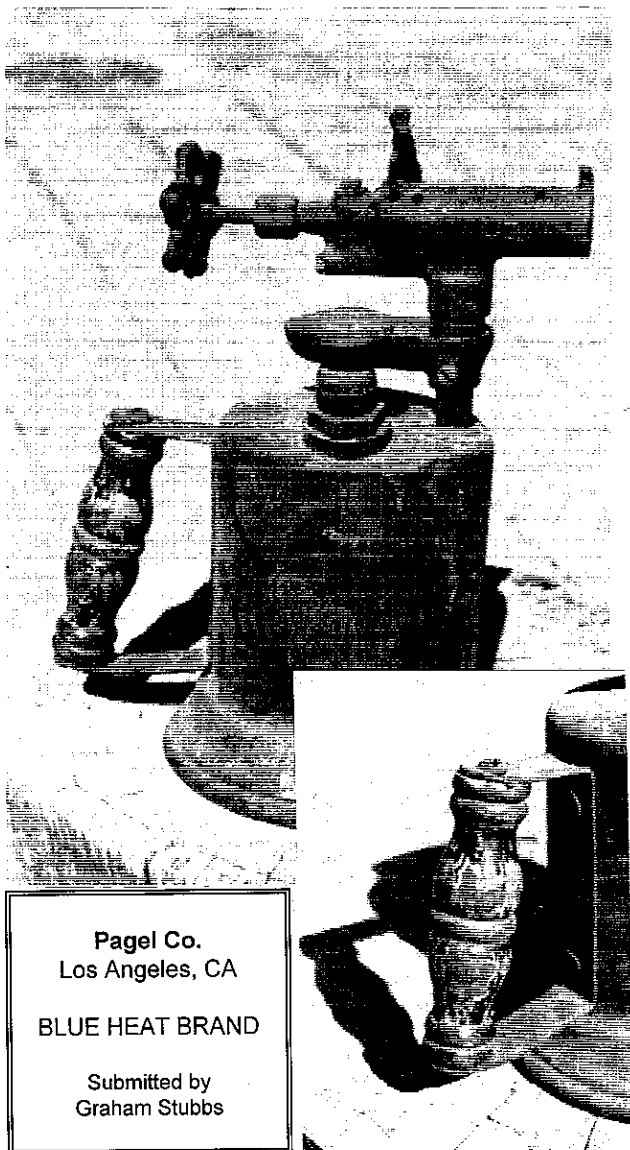
Mark Pedersen sent in a note advising that he has a MAHR (Jiffy) torch manufactured by the Diamond Iron Works, Minneapolis, MN. Mark describes the torch as a gallon size, steel tank, no air pump, and a ¼ inch pipe extension for an air supply. I also received a note from

John Dorffeld describing his MAHR (Jiffy) torch – Style 22. John indicated that MAHR was the manufacturer and was also located in Minneapolis, MN. Does anyone else have a MAHR torch to substantiate the manufacturer data?

Maurice Jernstedt sent in information on the NATIONAL PUMPLESS BLOWTORCH CO. Their torch looks exactly like the pumpless torch manufactured by the National Safety Co. as referenced in the 2nd Qtr. 1997 issue of THE TORCH. Is there another collector that has any information on the National Pumpless Blowtorch Co.?

Graham Stubbs was going through a pile of dirty torches in his garage, and discovered a PAGEL CO. torch, Blue Heat model, manufactured in Los Angeles, CA. The PAGEL torch is a quart size, pump in the fuel tank, with a fancy blue painted wood handle. From Graham's information, we believe that it is a brand labeled torch manufactured by Turner Brass Works, because Turner was a distributor of PAGEL Co. products (see attachment to *THE TORCH*, 3rd/4th Qtr. 1995). Turner Brass Works could also have produced the components and the PAGEL facility in Los Angeles could have assembled and labeled. Graham suggests not ignoring any of your torches..... all are worth looking at, again, for new information.

♦ ♦ ♦



Pagel Co.
Los Angeles, CA

BLUE HEAT BRAND

Submitted by
Graham Stubbs

- 2nd Annual Blow Torch Convention -

Jon & Judy Suta have graciously agreed to host the convention this year at their Mt. Vernon home on Saturday, September 11th. The convention last year was a successful, well-attended event with numerous torch displays, including a few rare pieces. Those in attendance remember that the weather did not fully cooperate, it was a bit wet and cool, hence the earlier date for 1999. We hope that the September date will work for all interested members, and that Mother Nature cooperates this year. Phil Roach is working with Jon on a flyer that will be mailed out in the upcoming weeks providing more details, directions, and how to register. If you plan to attend, then please contact Jon Suta, Phil Roach, or Ron Carr so we can have an early estimate of attendance. See attached membership list for phone numbers, email or mailing addresses.

Speaking of torch conventions, there is sufficient critical mass of BTCA members to warrant a torch meet on the East Coast or Midwest. With the close proximity of many East Coast and Midwest cities, there could be ample membership participation if someone is willing to volunteer as the host. Individuals interested in hosting such an event can contact Jon Suta or me for details, requirements, etc. It's not too late to consider hosting an event for later in the year, or to plan now for an event early in 2000.

♦ ♦ ♦



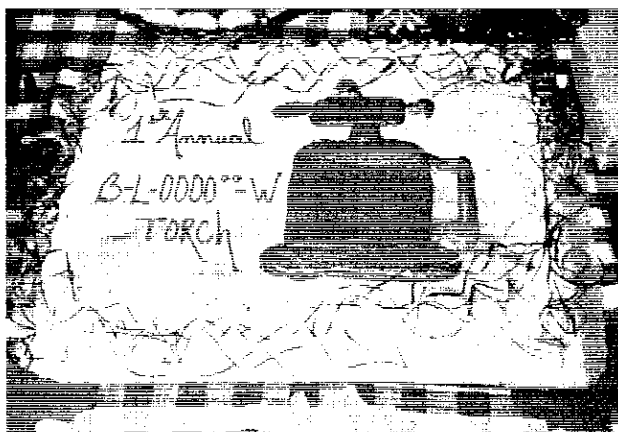
Jon Suta

Blow Torch Convention
October 3, 1998

◆ BTCA PATCHES ◆

Dick Sarpolus has been working with an embroider company on a patch designed and made for our BTCA group. It will be a basic design with lots of colors, and a flaming blow torch with Blow Torch Collectors Association in the border. The patch will be made by a reputable East Coast emblem company, rayon thread embroidered on washable twill, and is sized to fit on a hat, jacket or shirt pocket. It pays to advertise during your torch "hunts", and someone seeing your patch may help them to remember the treasured torch stashed away in their garage that you would pay almost anything to own. Dick and I are still working out the details and when all the particulars are settled, I'll advise on price and availability. I would appreciate if interested individuals could give me a "heads up" so I will have an idea of how many to order.

◆ ◆ ◆ ◆

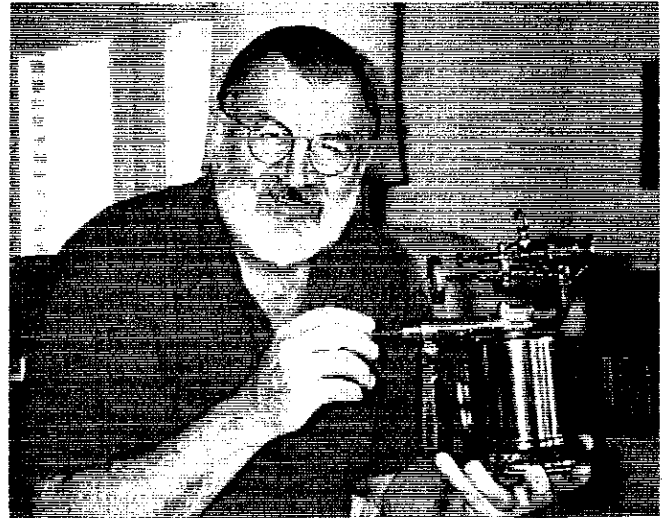


The Featured Dessert
Blow Torch Convention
October 3, 1998

HEY....IT'S FREE !!!

Don't forget that as a member of BTCA, you are entitled to run a free ad in every issue of *THE TORCH*. I would prefer not to repeat the same ad each issue, and would request that you re-submit a freshly worded ad each issue, even though it may contain the same basic information. Send ads, in any format, to BTCA Classified, 3328 258th Ave. SE, Issaquah, WA 98029.

◆ ◆ ◆ ◆



Turner Brass Works
MASTER line Blow Torch
Submitted by Gary Fye

Correction:

In the 3rd Edition, 1998 of *THE TORCH*, I reported information from our sister torch organization in England that was incorrectly stated. The torch organization in France was not founded in 1901 as reported, but was actually formed in 1992. The 1901 date was associated with the French act, which governed the formation of non-profit clubs. We can attribute this one to **Les Adams**, editor of *BLOWLAMP NEWS*, and yours truly for repeating the error. Speaking of our sister organizations, be reminded that the groups in England, France, and Belgium have numerous torch rallies throughout Europe. If you plan to travel to Europe in the near future, I would encourage contacting Les Adams or Michel Duval to see if your trip coincides with any of their torch gatherings. Another suggestion is to consider a subscription to the English newsletter, *BLOWLAMP NEWS*, or the French newsletter, *LESTROPHILESS*. Les Adams and Michel Duval are listed in our membership roster and you can contact them direct for subscription rates and mailing information.

◆ ◆ ◆ ◆

A NEW LOOK? You'll notice a few differences in the newsletter layout, and the ISSUE number that will identify this and future issues. As this is the 14th newsletter since the first issue, we'll call it Issue #14. Please also note the caveat on the front page regarding the reproduction of this newsletter.

PATENTS

While my free time was limited over the past few months, I still found sufficient time to continue my research on the Alcohol Style torches as previously featured on pages 5 & 6 of the 2nd Edition 1998 of *THE TORCH*. My travels through the patent library at the University of Washington have resulted in four new patents. Unfortunately, none of the 4 new documents indicate an associated manufacturer, however 2 patents carry LL Lasher as the inventor. If you recall, Lasher was associated with the **LASHER-WEBBER CO.**, the manufacturer of a commonly know torch, **JIM-DANDY**.

The remaining 2 patents reflect SC Brody as the inventor. Also, careful examination of one of the Lasher patents revealed that it was assigned to SC Brody, and that all four patents used the same patent attorney, George B. Rawlings. I suspect using the same attorney was more than just a coincidence, or perhaps a shortage of patent attorneys. It appears that Rawlings' patent attorney services for Brody & Lasher spanned 22 years from the youngest to the oldest patent. I have enclosed the SC Brody patent, #2,052,276, that more closely resembles the **JIM-DANDY** torch than previously known. Those of you that own a **JIM-DANDY** will easily recognize the patent sketch.

From the information presented, I would have to guess that SC Brody also worked for the **LASHER-WEBBER CO.** and the enclosed patent includes further torch improvements to the basic **JIM-DANDY** design.

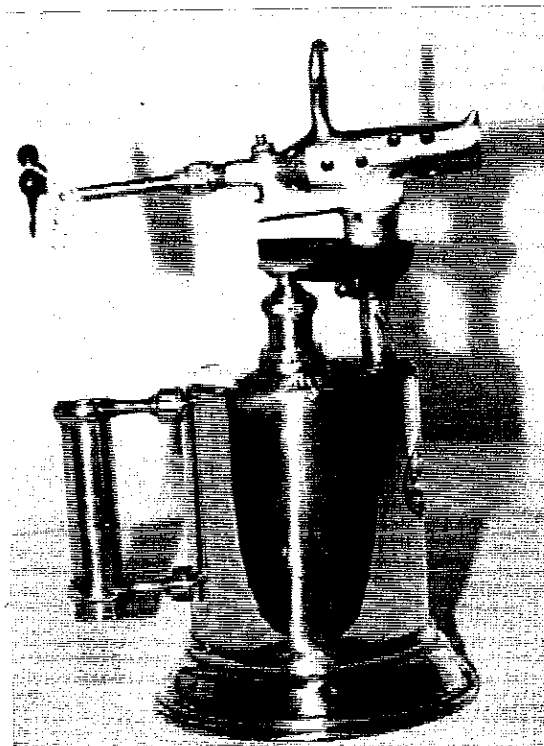
♦ ♦ ♦ ♦



Turner Brass Works
Sycamore, IL

Model #100
"Double Jet"

Submitted by Dave Schulte



Turner/White Blow torch
Mfg'd by Turner Brass Works
Sycamore, IL

Submitted by Richard Gjersee

TURNER BRASS WORKS

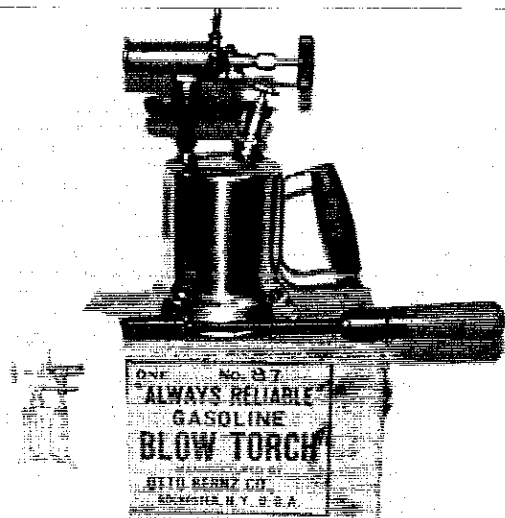
As of January 1, 1999 the **Turner Brass Works** of Sycamore, IL closed its doors...forever. The Sycamore Chamber of Commerce advised that Turner was purchased by **Bernz-O-Matic**, a company originally known as the Otto Bernz Co. Some of you may also recognize the **Bernz-O-Matic** name from the present propane torches that bear that name. The Cooper Hand Tools Co. had purchased Turner a few years earlier, and continued to operate the Turner facility under the Turner name in Sycamore, only to sell it off to the **Bernz-O-Matic Co.** The Chamber of Commerce was kind enough to send me Turner literature dating from the 1960's, and I will put together a complete story of the Turner Brass Works for the next newsletter and include copies of the literature.

♦ ♦ ♦ ♦

Y2K

Y2K is around the corner, and there seems to be mixed concern for the world outcome on January 1, 2000. Yet.....there is another significant event that will take place on 1/1/00. We will all have antique blow torch collections from the 19th and 20th centuries, and what was an everyday tool, produced during the Industrial Revolution and into the early 1960's, is now from one or two different centuries. To repeat the sage advice from Vicky Wood-Teeters Dad, "Torch prices are going up....hang on to them and buy MORE!"

♦ ♦ ♦



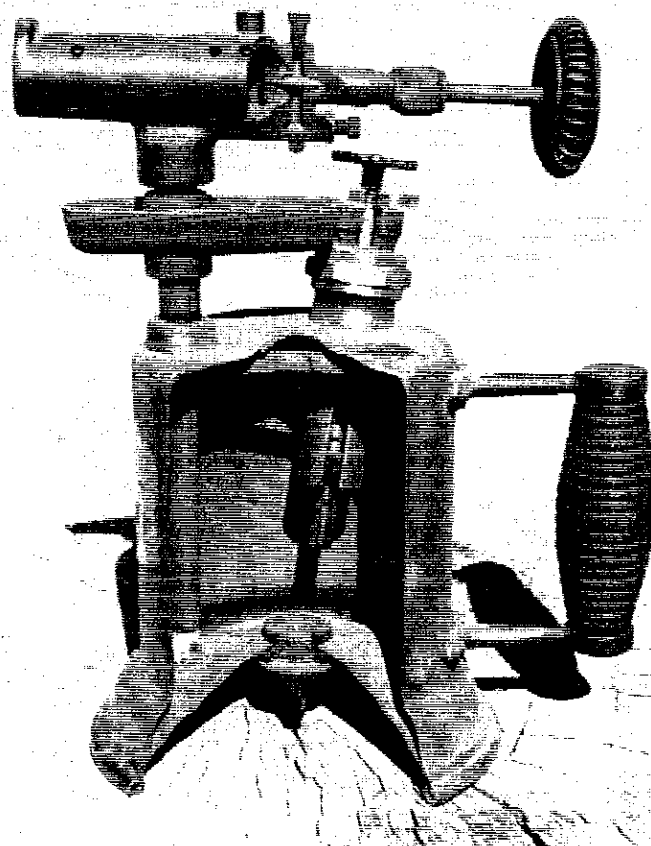
Otto Bernz Manufacturing Co.
Model #87 With Original Box And Instructions
Submitted by Dave Kolb

➔ WEBPAGE ➔

Thanks to **Phillip Anderson** and other contributors, we now have a dedicated Internet webpage, www.indy.net/~toper/BTCA. Future plans are to adopt a more specific webpage address that reflects our organization, and Phillip and I are working on the details. Much of Phillip's work and talent went into the webpage design and construction, and while the site is still "under construction", we've had numerous hits, or visits, all

with positive results. Surfers are encouraged to visit on occasion and advise our Webmaster, Phillip, of any comments, corrections, or suggestions. **Well Done Phillip!**

♦ ♦ ♦



Otto Bernz Mfg. Co.
Newark, NJ
Salesman's Sample

Submitted by Graham Stubbs

As you can see by the variety of torch photos in this issue, there has been great support from many of our members. As always, I sincerely appreciate all of your valuable contributions, and I will continue to strive for meaningful newsletters with your continued support. Enjoy the summer and all that it brings....and I'll see you later in the year.

RON